

## INSIDE THIS ISSUE

Pearl's Woodall retiring from  
Mississippi College - pg. 4

Pearl athletes sign for next level  
sports - pg. 6

# The Pearl News

Good News  
You Can Use

Vol. 5, No. 5 | May 2020

The Pearl News is a subsidiary of **SWRANKIN NEWS**

## PPSD honors school lunch heroes

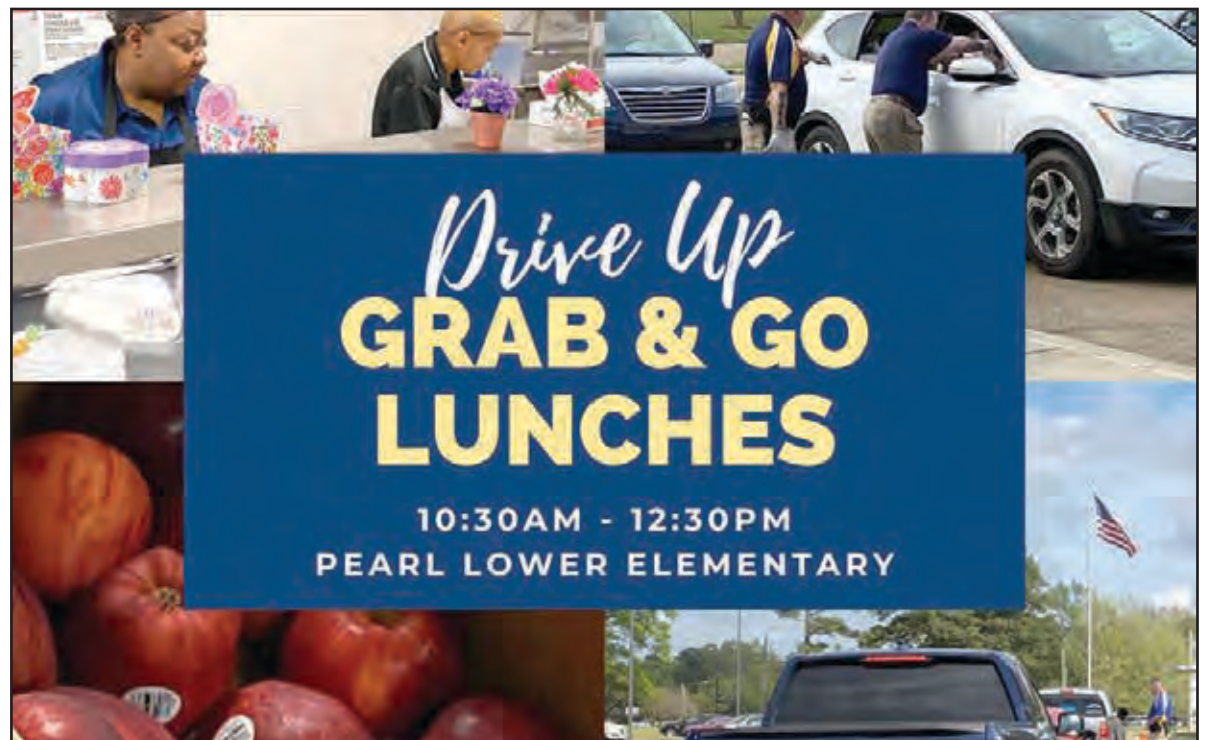
*Special to The Pearl News*

Recently, Pearl Public School District (PPSD) showed their appreciation for their school nutrition staff as part of National School Lunch Hero Day. Administrators participated in a parade for the school lunch heroes who have been serving the grab-and-go meals at Pearl Lower Elementary during the school closure. In addition to the parade, a Pearl Junior High School student concluded his end-of-the-year project by distributing gifts of appreciation to the nutrition staff who have been serving meals during the school closures.

Even though school has been closed since March 30, members of the cafeteria team in PPPSD have served a total of 39,535 meals from one location, with 38,202 of these meals free of charge to children under the age of eighteen. Friday, May 1, marked

the annual School Lunch Hero Day, which provided the opportunity to celebrate the cafeteria team's efforts as frontline heroes who have stepped up in a big way to make sure students in Pearl don't go hungry during the COVID-19 pandemic.

The public is encouraged to use social media to post pictures and videos showing their appreciation for the PPPSD School Lunch Heroes with the hashtag #PirateLunchHeroes.



*Special to The Pearl News*

## President of MSOGR discusses the joy of roses

*By Alexa Haik*

The Mississippi Old Garden Rose Society's (MSOGR) main objective, according to their website, is "to provide a structured platform for the older generation to impart their experience and knowledge to the younger generation." MSOGR's President, Betty Miles Newman, explains that the common bond of the members is a shared love for roses and rose culture. Among the many benefits of being a member of the Society is access to free roses as well as an assortment of pass along plants that are not available at local nurseries and big box stores. The society also provides invaluable information regarding local soils and growing condition. It is a 501(c)(3) affiliate of the American Rose Society and the Heritage Rose Foundation. Currently, the society is made up of thirty non-professional rose growers.

According to Newman, is a Pearl resident and master gardener, "roses have gotten a bad wrap [and] hybridizing



Courtesy of Betty Miles Newman

is the culprit." Newman describes the original rose plant as a "real survivor... requiring absolutely no care." 1867 was a pivotal year for the rose, as it was the year the pursuit of the ideal (a long stem,

beautiful petals) began. To achieve perfection, rose gardeners hybridized them to a point where they lost their scent as well as the ability to thrive.

Consequently, it is no surprise that MSOGR favors roses that pre-existed that infamous year. In that regard, Newman says that the best way to grow an "old garden" rose is to obtain a root cutting from an existing plant.

MSOGR's local source for old garden roses is the Greenwood Cemetery situated near downtown Jackson. Society member Cecile Wardlaw is a volunteer curator of the cemetery garden, which

allows access to the plentiful old garden roses that continue to thrive there. Which is why, on the first Saturday of each February, the group hosts a rose pruning party. This annual celebration is open to the public and allows interested parties access to the cemetery garden to prune and collect cuttings for transplantation.

Newman encourages anyone who is interested to visit the MSOGR website for a complete schedule of group meetings. Society members typically gather the third Sunday of each month, and meeting locations vary, but have included the Pearl Community Center as well as the Greenwood Cemetery. Currently, due to social distancing restrictions, the group keeps connected via email.

The annual cost for membership is \$20 for an individual and \$25 for a couple. For more information, visit [www.msogr.com](http://www.msogr.com) or MSOGR Facebook page.



**Derek Havard**  
c: 601.672.8147  
o: 601.340.9656

## Over 475 Homes



**sold**



**HAVARD**  
REAL ESTATE  
GROUP



## INSIDE THIS ISSUE

RHS and RFD honored at Governor's Awards Luncheon - pg. 4

Richland's Big Fix Clinic re-opens for business - pg. 7

# THE NEWS RICHLAND

**Good News  
You Can Use**

Vol. 5, No. 5 | May 2020

The Richland News is a subsidiary of **SWRANKIN NEWS**

## Richland's FedEx center enforces recommended safety precautions

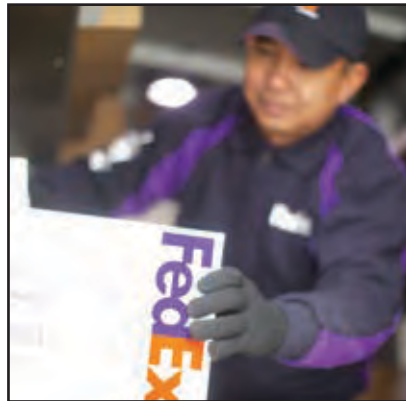
*Special to The Richland News*

Southwest Rankin News reached out to FedEx's corporate office recently to inquire about their response to the ongoing pandemic, particularly in regards to the safety and operational procedures of the local Shipping Center in Richland. What precautions are being taken with the COVID-19 outbreak? How have operations changed? What, if any, challenges have they had to face? FedEx released the following statement:

"The safety and well-being of our team members and customers is our top priority. As an essential business, FedEx takes seriously our responsibility to continue delivering critically needed supplies as the country responds to the COVID-19 pandemic. We are closely monitoring guidance by the Centers for Disease

Control and Prevention (CDC) and other public health organizations and are taking recommended precautions in terms of employee and customer health and safety.

In anticipation of the recent changes to CDC guidance regarding masks, our sourcing team proactively ordered millions of additional masks primarily for our front line and customer facing team members such as drivers, package handlers, retail team members and others to utilize while working. We continue to work diligently to provide supplies across the network to assist with hygiene, includ-



Courtesy of FedEx

ing re-stocking our facilities with cleaning supplies, disinfecting wipes, hand sanitizer and thermometers. In addition, we are encouraging our employees to take any signs of illness seriously, seek medical attention as needed, and promoting guidance from leading public health organizations on how to keep

the workplace safe.

We've also taken a number of other steps to support the health and safety of our employees, as well as the customers with whom they interact. For example, to help adhere to social distancing guidelines, signatures are no longer be-

ing required for most deliveries. We're also working to accommodate special requests from customers around modified store hours, closings and delivery alternatives that best comply with government restrictions and safety guidance. Most importantly, we are in constant communication to ensure employees have access to the latest guidance from the CDC and other health authorities."

Richland's FedEx Ship Center is located at 440 Highway 49 South in Richland. The Center offers: Monday through Friday Express Hold at FedEx location, Saturday service, Saturday Hold at Location, dangerous goods shipping, express services, ground services and international shipping. Call 800.463.3339 with questions or visit <https://local.fedex.com/en-us/ms/richland> for further information.

## Richland-Florence Garden Club, how their community grew

*By Alexa Haik*

Spring has sprung in Mississippi, and, as everyone knows, spring in 2020 is far from business as usual. While the community desires and awaits a return to normalcy, prospects abound by way of home projects that have remained undone, for various reasons.

The Richland-Florence Garden Club recently spoke with *The Richland News* to discuss their organization as well as opportunities for membership. Perhaps spring 2020 will also be the season that more community members discover their green-thumb.



Special to The Richland News

## MS SPAN receives special grant

*Special to The Richland News*

Mississippi Spay and Neuter (MS SPAN) has been awarded \$43,421 grant from Dogs Trust USA. The funds will be used to spay and neuter 667 dogs in low-income households located in Hinds, Rankin, Madison, Copiah and Simpson Counties.

"Mississippi is in the midst of a companion animal overpopulation crisis, with nearly 85% of animals surrendered to our local open-admission shelter being euthanized because there are not enough homes available. Spay and neuter is the most affordable, effective, and humane way to control the population and to prevent animals from entering shelters," says Sharon Garner, Executive Director of MS SPAN.

Residents of the five qualifying counties with a household income under \$28,000 per year may request an appointment by calling the Big Fix

Clinic at 601-420-2438 or visiting [msspan.org/bigfixappointment](https://msspan.org/bigfixappointment).

Mississippi Spay and Neuter's mission is to end the euthanasia and suffering of homeless animals by providing affordable spay and neuter services. They operate The Big Fix Clinic in Richland, which performs more than 5,000 surgeries per year, as well as a voucher and referral program. They provide free transportation from three outlying communities each month.

Dogs Trust USA's mission is to bring about the day when all dogs can enjoy a happy life, free from the threat of unnecessary destruction. Dogs Trust works to help as many dogs as possible in the United States though their grants program, to find loving homes, and to live happy and healthy lives, while also working closely with dog welfare organizations around the world to help dogs who are being exploited or suffering harm, and to transform the way people think about dogs around the world.



Special to The Richland News

**See page 2 for  
full article.**



**Derek Havard**  
c: 601.672.8147  
o: 601.340.9656

**Over 475 Homes**



**sold**



**HAVARD  
REAL ESTATE  
GROUP**



## INSIDE THIS ISSUE

Michel of Florence named for HCC academic team - pg. 5

Florence's JROTC compete at Pine Belt Pentathlon- pg. 11

# THE FLORENCE NEWS

## Good News You Can Use

Vol. 5, No. 5 | May 2020

The Florence News is a subsidiary of **SWRANKIN NEWS**

## Scouts provide tips on thriving with limited resources

By Alexa Haik

The motto of the Boy Scouts of America, "be prepared," is synonymous with the moniker itself. So it stands to reason that they possess a wealth of knowledge to aid in a time of rapidly changing circumstances and general uncertainty. In that regard, *The Florence News* recently spoke with local resident and scoutmaster Todd Bridges. The focus of the discussion was "which scout tips and skills could prove useful to those among us with limited resources, for an extended period of time?"

Three important resources were culled as a result: simple recipes taken from the scouts' very own cookbook, potable water solutions for folks without immediate access to bottled water, and home-bound activities for anyone looking for ideas on how to fill these "safer at home" days.

In regards to recipe ideas, Florence's Troop 85 typically distributes a "mini scout cookbook" to all of their new recruits. It's pages are filled with simple recipes, including desserts and main dishes, all made to cook in an outdoor environment. All recipes require little to no prep time, a minimum of ingredients, and most ingredients require no refrigeration. The good news to those without any scout experience or training is, these recipes are easily accessible to anyone with internet access by searching for "scout camp-out meals" online.

For the following recipes, a Dutch oven is the preferred means of preparation. It will cook anything that requires baking, or any type of goulash or stew. An eight to twelve quart Dutch oven can be purchased for approximately \$50 at any Walmart.

### "Troop 85" Shepherd's Pie

Take a can of beef stew, dump it in a Dutch oven, and in a separate pot boil some water and cook up some instant potatoes. Mix up the instant potatoes and pour them on top of the beef stew. The potatoes create a two or three inch layer on top. Also, if available, sprinkle some shredded cheese on top. It takes no



Special to The Florence News

time to do, and all that is needed is one can of beef stew and a packet of mashed potatoes. This simplified shepherd's pie recipe is very filling, and loaded with protein and carbohydrates. "Kids absolutely love it," says Bridges.

### Peach Cobbler

One of the most popular things scouts do for dessert is a cobbler recipe. Take any yellow cake mix and one large can (or a couple of regular size cans) of peaches in syrup. First, dump the peaches into a dutch oven, if the peaches are not in heavy syrup, add a little sugar. Add the cake mix on the top, and don't worry about mixing it up. If butter is on hand, add half a stick of butter. Cook over heat. When it is fully cooked, while the peaches heat up, the cake mix will develop a nice crust. Bridges says "it is absolutely fabulous with just a couple of ingredients."

### Potable water options

On a long hike or overnight stay in a remote location where drinking water is scarce or completely unobtainable, there are a few options available to a scout troop. The first and simplest way is to boil water "vigorously" for one to three minutes. The second "old school" method scouts use for obtaining drinkable water is what are called water purifying tablets. The tablets are available at any outdoor/camping department or store and may be easily purchased online. However, the scouts' preferable way to

access drinking water while outdoors is by way of a "Sawyer mini-water filtration system." It works as a specialized drinking straw by screwing directly onto the top of a water bottle...removing bacteria, protozoa, and microplastics while water is sipped directly through the filter. The Sawyer system is also available at any retail establishment that has an outdoor/camping department for approximately \$20.

### Activities for the family while at home

From his experience, Scoutmaster Bridges believes kids seem to benefit most from two things: one, having a set routine and two, quality time with a parent or caregiver. He recommends discussing with children a specific daily recreational activity and also setting a schedule for "game time" with the family. Bridges says that "maintaining a schedule of events works wonders, especially for kids of elementary age."

Bridges proposed pooling a group of four or five kids and at least one adult, dress-up in outdoor costumes (feel free to be creative) and compete as contestants on a home-bound version of TV's *Survivor*. Bridges assures that, from his experience, any time spent with children can be fun as long as a parent or responsible adult is involved, "[and kids] will forget about their boredom and everything else...[remember that] the activities don't have to rise to any certain level."

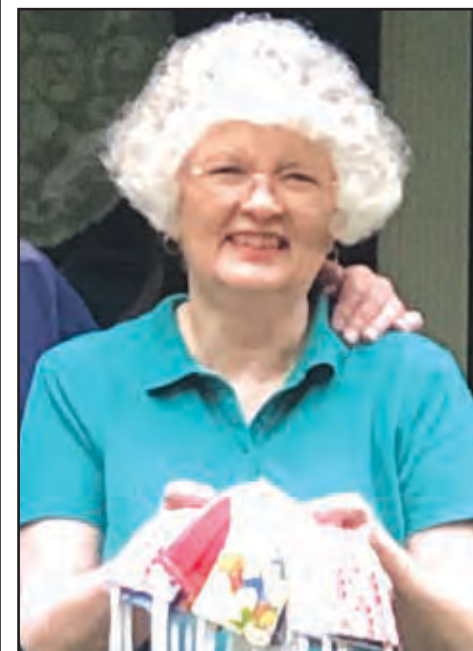
## Florence's Cooper provides masks for MSH staff

Special to The Florence News

A number of volunteers from the surrounding community have contributed their time and talent to make protective face-masks for Mississippi State Hospital (MSH) staff during the COVID-19 crisis.

Among the contributors were the Rankin County Homemakers Quilting Club, as well as Florence Resident Donna Cooper, who recently made and delivered a batch of masks to the State hospital in Whitfield.

MSH administration and all employees wanted to express their gratitude for the support and kindness shown by these volunteers during this difficult



Special to The Florence News

Donna Cooper.

time.

MSH, a program of the Mississippi Department of Mental Health, was founded in 1855 and helps the individuals it serves achieve mental wellness by encouraging hope, promoting safety, and supporting recovery. The hospital is accredited by the Joint Commission.



**Derek Havard**  
c: 601.672.8147  
o: 601.340.9656

Over 475 Homes

**sold**



**HAVARD  
REAL ESTATE  
GROUP**



# Richland-Florence Garden Club, how their community grew

By Alexa Haik

In the beginning, the Richland-Florence Garden Club (RFGC) was simply an un-designated group of women from Richland who would regularly meet at a member's home, enjoy walking and looking at the flowers, sharing ideas as well as plants. In 2012, sixteen of these women took things a step further by referring to themselves as the Richland Garden Club. As it stands today, the officially designated Richland-Florence Garden Club is federated with the Garden Clubs of Mississippi, Inc., is a Member of the National Garden Clubs Inc., the Deep South Garden Club, Inc., and included in the Natchez Trace District. Their stated mission is "to take an active role in beautification and community service in the cities of Richland and Florence, Mississippi, by promoting and collaborating endeavors towards the beautification of [their] streets and public places. [They] will make it an objective to work with other agencies in furthering the interest of the Richland-Florence Garden Club members in conservation, horticulture, and landscape design."

Currently, the club consists of twenty three active members, approximately half of their numbers reside in Richland while the other half hail from Florence. Of those twenty-three members, seven are trained and certified mastergardeners. RFGC officers include: President Carol Azzone of Richland, Vice Pres-

ident Debbie Knight of Florence, Recording Secretary Gaynell Ainsworth of Richland and Treasurer Susan Harrison of Richland.

Monthly meetings consist of a social with refreshments provided by hosts and include a guest speaker discussing various horticultural topics. In the past, topics have included: growing tomatoes

in a straw bale; decorating mantles for Christmas; how to set up a rain water collection system; how to attract blue-birds to your yard and how to best grow various plants.

In addition to regular meetings, RFGC also maintains an active presence within the two communities via donations

2019 implementation of the Blue Star Memorial at Florence City Hall, as well as an Adopt-a-School partnership with Richland Upper Elementary.

Annually, RFGC hosts a bake sale scheduled around the Christmas Totally Local Market in Richland, a garage sale in spring as well as a tree planting for Arbor Day.

The Club meets the first Thursday of month. Meeting locations vary, but in the past have included the Richland Community Center, a local nursing home and occasionally a member's private residence.

Anyone interested in making new friends, enhancing their gardening skills and improving the image of their local communities may join in the month of October. Annual dues are \$25 for individual membership. RFGC's year begins in October of each year and ends the following May.

For further information, contact President Carol Azzone [cadazzibe@aol.com](mailto:cadazzibe@aol.com), VP Debbie Knight [beautistiop@att.net](mailto:beautistiop@att.net), Recording Secretary Gaynell Ainsworth [gaynellainsworth@att.net](mailto:gaynellainsworth@att.net) or Treasurer Susan Harrison [susehrsn@yahoo.com](mailto:susehrsn@yahoo.com) or visit the Richland-Florence Garden Club Facebook page.



Special to SW Rankin News

Pictured (l to r) are, front row: Teenie Boone, Carol Azzone, Susie Gullede, Scottie Boyanton, Doris Davis, Marie Phillips, speaker Joan Alliston, Elizabeth Hawthorne and Rowan Craft; and back row: Debbie Knight, Gaynell Ainsworth, Doris McBride, Minetta Veazey, Lynn Wynn, Sandy Ashley, Susan Harrison, Linda Stringer and Joan Benton. Not pictured: Sandra Boyles, Carol Goldman, Beverly Hemphill, Shannon Laseter, Beth Sanford, Glenda Scoggins and Shirley Wilson.

ident Debbie Knight of Florence, Recording Secretary Gaynell Ainsworth of Richland and Treasurer Susan Harrison of Richland.

Monthly meetings consist of a social with refreshments provided by hosts and include a guest speaker discussing various horticultural topics. In the past, topics have included: growing tomatoes

and various philanthropic activities, such as: donating a bench at Richland City Hall, reading and donating gardening books for children at Steens Creek and Richland Lower Elementary, donating craft supplies and books for women and children at the local domestic violence shelter, regular nursing home visits with flowers, the November

## SWRANKIN NEWS

P.O. Box 5963, Pearl, MS 39208  
601-706-9237

Volume 5 Issue 5  
Circulation - 15,000

### Publisher

Clay Mansell  
[claymansell@SWRankinNews.com](mailto:claymansell@SWRankinNews.com)

### Editor in Chief

Stephanie Tracy

### Managing Editor

Alexa Haik  
[news@swrankinnews.com](mailto:news@swrankinnews.com)

### Sales Representatives

Clay Mansell  
[claymansell@SWRankinNews.com](mailto:claymansell@SWRankinNews.com)

### Graphic Designer

Katie White  
[designer@SWRankinNews.com](mailto:designer@SWRankinNews.com)

### Office Manager

Doris Bynum

### Distribution

Ben Barnett

For submission information, email  
[news@SWRankinNews.com](mailto:news@SWRankinNews.com).

Southwest Rankin News is published  
on the second Tuesday of every month.

Copyright 2020. All rights reserved. Materials may not  
be reproduced in whole or in part without written  
permission of the publisher.



Find us on  
**Facebook**

[www.facebook.com/SWRankinNews](https://www.facebook.com/SWRankinNews)

LeafFilter  
GUTTER  
PROTECTION

**CLOG-FREE GUTTERS  
OR YOUR MONEY BACK  
GUARANTEED!**

BEFORE LeafFilter

AFTER LeafFilter



CALL US TODAY FOR  
**A FREE ESTIMATE**

**1-601-488-2514**

**Promo Code: 285**

Mon-Thurs: 8am-11pm, Fri-Sat: 8am-5pm,  
Sun: 2pm-8pm EST

**15% OFF**

YOUR ENTIRE LEAFILTER PURCHASE\*  
Exclusive Offer - Redeem By Phone Today!

ADDITIONALLY

**10% OFF SENIOR &  
MILITARY DISCOUNTS**



PLUS!

THE FIRST 50  
CALLERS WILL  
RECEIVE AN ADDITIONAL

**5% OFF\*\***

YOUR ENTIRE INSTALL!  
\*\*Offer valid at estimate only

FINANCING  
THAT FITS  
YOUR BUDGET!¹

¹Subject to credit  
approval.  
Call for details.

\*The leading consumer reporting agency conducted a 16 month outdoor test of gutter guards in 2010 and recognized LeafFilter as the "#1 rated professionally installed gutter guard system in America." CSLB# 1035795 DOPL #10783658-5501 License# 7656 License# 50145 License# 41354 License# 99338 License# 128344 License# 218294 License# 603 233 977 License# 2102212986 License# 2106212946 License# 2705132153A License# LEAFNW822JZ License# WV056912 License# WC-29998-H17 Nassau HIC License# H01067000 Registration# 176447 Registration# HIC.0649905 Registration# C127229 Registration# C127230 Registration# 366920918 Registration# PC6475 Registration# 1R731804 Registration# 13VH09953900 Registration# PA069383 Suffolk HIC License# 52229-H

Submit &  
Announce  
*Weddings  
& Births*

Call Clay  
today to find  
out how to let  
your neighbors  
know about your  
good news.

**601-397-4442**





Local Churches



During the COVID-19 Quarantine  
**SKYWAY HILLS CHURCH OF CHRIST**  
Offers Our Weekly Message at  
[www.skywayhills.com/message-central/](http://www.skywayhills.com/message-central/)  
To worship God is to stay connected to God.  
Let Skyway help you stay connected.

*"The Lord is my light and my salvation, whom shall I fear?  
The Lord is the strength of my life; of whom shall I be afraid?"*  
Psalm 27:1



For more information, link to [www.skywayhills.com](http://www.skywayhills.com).



**First St Church**  
ss. 5:12

**Online Services: Sundays 9 am and 10:00 am**  
**On our Facebook page or [FBCRichland.org](http://FBCRichland.org)**



**FBC RICHLAND**  
1102 Highway 49 South  
Richland, MS 39218  
601-939-1715  
[www.fbcrichland.org](http://www.fbcrichland.org)  
[www.anchoredsm.com](http://www.anchoredsm.com)

THE PERFECT CHURCH FOR PEOPLE WHO AREN'T



**RESTORATION CHURCH**

SERVICES AT 9:30 & 11 AM

2136 US 49, FLORENCE, MS




Obituaries

NAME	AGE	CITY	DOD	Funeral Home
Brenda Joyce Macoy	70	Florence, MS	03/31/20	Chancellor Funeral Home
Lynly Joyce Green	2	Florence, MS	04/06/20	Chancellor Funeral Home
Jamie "Kay" Gray	72	Florence, MS	04/07/20	Chancellor Funeral Home
Todd S. Wilson	43	Brandon, MS	04/09/20	Chancellor Funeral Home
Janice Barron Grantham	73	Florence, MS	04/12/20	Chancellor Funeral Home
Jeffrey "Jeff" Zattoni	53	Florence, MS	04/14/20	Chancellor Funeral Home
Kellie Summers Pennock	48	Florence, MS	04/14/20	Chancellor Funeral Home
John E. Tuomala	78	Jackson, MS	04/15/20	Chancellor Funeral Home
Betty Moorhead	72	Richland, MS	04/15/20	Chancellor Funeral Home
Cathy Bates Ford	63	Florence, MS	04/17/20	Chancellor Funeral Home
Dianne Broome Cauthen	67	Florence, MS	04/20/20	Chancellor Funeral Home
Jerry E. Miley	89	Mendenhall, MS	04/21/20	Chancellor Funeral Home
Ouida Patterson	91	Florence, MS	04/25/20	Chancellor Funeral Home
Johnnie "Lee" Hedgepeth	80	Florence, MS	04/25/20	Chancellor Funeral Home
Theo "Inez" Brannon	87	Florence, MS	04/26/20	Chancellor Funeral Home
Kenneth Wallace	56	Florence, MS	04/27/20	Chancellor Funeral Home

Old Truths for Today

By J.T. Morgan



PERSPECTIVE OF THE CROSS

"For the preaching of the cross is foolishness to those who are perishing, but to us who are saved it is the power of God. For it is written, I will destroy the wisdom of the wise, and bring to nothing the understanding of the prudent." (1 Cor.1:18-19).

From the viewpoint of the world the cross of Jesus Christ makes no practical sense. How is it possible the painful, illegal and unjust death of an innocent man be either powerful or bring power? How can such a man's death alter the course of human history? From a worldly standpoint it makes no sense, in other words it is foolishness. Yet this is the way God chose to demonstrate His love for man. It was through the foolishness of the cross that God choose to save man. What is there in the cross that gives it such power?

Man is seen as the crowning achievement of God's creation. (Gen.1:28-31). God sees man as precious, of a value only man's Creator could grasp. What other reason could there be for God to "give His only begotten Son" except for His overwhelming love for man? (John 3:16).

It was not long before God found himself at odds with His valued creation. When man chose to sin against God, another part of God's nature was put to the test. "God is light" (1 John 1:5) and cannot be where there is the darkness of sin. For this reason God was forced to cut off His precious creation, man. Because of sin now man is cut off and expelled from Eden and from that time has suffered separation from God due to sin. (Isa.59:1-2). God's just nature demands that sin be punished and this puts God in a dilemma. How can a loving God, who has elevated the highest and most precious creation condemn those same people due to sin? Yet how can this same God save those people as they are without ignoring His own just nature?

It is at this point we see the cross leaping into prominence. Through the cross, God was able to find a way to satisfy both His demand for justice and His demand for love. By offering up a perfect sacrifice for sin, "without blemish, without spot" (1 Pet.1:18-19), God's justice was satisfied. By offering His own Son as that sacrifice, God could demonstrate both His love for man (1 John 4:8-10) and the necessity for justice. Now God offers salvation through Jesus based on the blood the Lord shed on the cross. It is in the cross, which the world call foolishness, that God found the way to be both just and justifier (Rom. 3:26).

The power of the cross will never be realized through human wisdom. Men can never understand the energy of the cross without first looking at the nature of God. Man can never appreciate his own status before God until he realizes God's love and forgiveness. The cross is not just a matter of historical fact but is a powerful force changing the lives of hurting, hungering people. This will never make sense to the world, but to us who are saved, it is our joy and salvation!

Florence Church of Christ

P.O. Box 277, 220 White Street, Florence, Ms 39073

Visitors are always welcome!

Who will you trust with the most precious thing in your life?

As a family-owned and operated funeral home, we believe we are better prepared to serve your family.

Those you know and trust,  
**Chancellor Funeral Home**



7225 Siwell Road•Byram•601-372-2955 • [www.chancellorfuneralhome.com](http://www.chancellorfuneralhome.com) • 2576 Highway 49 South•Florence•601-845-4449



**Trustmark**  
Banking and Financial Solutions



# Pearl's Woodall retiring from Mississippi College

Special to SW Rankin News

A Mississippi College professor and Pearl resident, Deborah Woodall, is retiring this Spring after nearly four decades of splendid service on the Clinton campus. Teaching computer science and mathematics at her alma mater for thirty-nine years was a perfect fit for the Pearl resident. "I could not have asked for more special coworkers or a more wonderful employer," Woodall said. "I've had so many wonderful students."

Her career began as a Pearl Junior High math instructor in 1974 and by 1980-81, she taught the subject at Pearl High School.

Woodall joined the Mississippi College faculty in 1981. Advising students and campus duties were always priorities. She's been the co-leader of Freshman Experience groups, assisted in MC Science and Math Tournaments and served as treasurer of the university's Faculty Club since 2008.

She's taught math courses from Trigonometry to Calculus II. Her computer science classes ranged from BASIC language to computer architecture. Deborah is a former member of the



Special to SW Rankin News  
Professor Deborah Woodall.

Mississippi Teachers of College Mathematics. In addition, Woodall conducts Basic Computer Skills workshops for the Clinton community. She is a Phi Mu Epsilon Honor Society member.

"Professor Woodall has helped many students (often from non-STEM majors) to make sense of the logical thinking and problem solving that studying mathematics provides," says John Travis, chair of the Mathematics Department.

Woodall helped construct the university's original computer science curriculum decades ago. Computer science professor Glenn Wiggins praises his colleague and friend with these words, "MC owes her a debt of gratitude for her tireless efforts over almost four decades."

The Pearl Resident's connections to MC run deep. She earned her bachelor's in mathematics at Mississippi College in 1974 after three years as the department's student worker grading papers and tutoring classmates. Woodall earned a master's of education in the subject at MC in 1978. Deborah also received a master's in computer science education at the University of Evansville in Indiana in 1983.

# RHS and RFD honored at Governor's Awards Luncheon



Special to The Pearl News

Pictured (l to r) are: Assistant Superintendent Buddy Bailey, RHS Principal Dr. Scott Rimes, Jessica Sanford, Micah Sanford, Mayor of Richland Pat Sullivan, Ashley Hinton, RHS Assistant Principal Corey Yates, Chief Brandon Weems and Superintendent Dr. Sue Townsend.

Special to SW Rankin News

Richland High School (RHS) and Richland Fire Department (RFD) were recently award-

ed the Partnership Excellence Award during the Eighteenth Annual Governor's Awards luncheon by The Mississippi Association of Partners in Education (MAPE).

## Save Now On Home Security

Monitored by ADT® the #1 home security company in the U.S.

**ADT® 24/7 Monitored Home Security**

- 24/7 monitoring provides peace of mind
- Yard sign and window decals help deter crime
- Quickly connect to emergency response
- May qualify for a homeowners insurance discount

**GREAT LOW PRICE**

**MONITORING \$27<sup>99</sup> PER MONTH**

**FREE HOME SECURITY SYSTEM**

**FREE SECURITY SYSTEM**  
New customers only. Early termination fee applies. Installation starts at \$99 with 36-month monitoring agreement. See all offer details below.

**FREE VISA® GIFT CARD**  
From Protect Your Home — \$100 Value

**FREE 7 WIRELESS DOOR/WINDOW SENSORS** — \$695 VALUE!

**FREE WIRELESS REMOTE CONTROL** — \$139 Value

**FREE OUTDOOR CAMERA**  
When you upgrade to ADT Pulse® + Video — \$299 VALUE!

**LIMITED TIME OFFER—CALL TODAY!**

**1-866-216-5805**

Ask about same-day installation! Reply By July 18, 2020

**ADT** **Protect Your Home**

# Call Today to Protect Your Family

**Brakes**  
**Timing Belts**  
**Water Pumps**  
**2 & 4 Wheel Alignments**

**Clutches**  
**Certified A/C**  
**And More**

**Richland Wrecker Service and Auto Repair**

**601-502-3706** **24 HOUR**

**24-Hour Service • We go the extra mile**  
**"22 years experience in auto repair"**

**(601) 936-0003** **2651 Hwy. 468** **(601) 936-0353**  
(Business Phone) Pearl, MS 39208 (Fax)

**1 IN 4**

**SCHOOL-AGE CHILDREN HAS A VISION PROBLEM**

The majority of these problems have no easy-to-detect symptoms.

**EYECARE ASSOCIATES**

**OPTICAL 2000**

815 Hwy. 80 East  
Clinton, MS 39056  
Phone: (601) 924-4444  
Fax: (601) 924-4100

**Dr. Bobby C. Pankey**  
**Optometrist**  
**Cell: (601) 613-3173**

655 Highway 49, Suite M  
Richland, MS 39218  
Phone: (601) 932-3727  
Fax: (601) 932-3728



BO CHANDLER

601-932-1306 601-213-7732

CONRAD

MARTIN

REAL ESTATE, INC.

www.conradmartin.com www.chandlerrealty21.com

The Most "Red" Sign In Mississippi

Check out [chandlerrealty21.com](http://chandlerrealty21.com). It is updated daily & designed to assist YOU the consumer with a FAST way to find your perfect location.

Your Next House is One Click Away

Helping You From Start to Finish

SEARCH FOR YOUR DREAM HOME

START YOUR HOME SEARCH

15000

25000

35000

45000

55000

65000

75000

85000

95000

105000

115000

125000

135000

145000

155000

165000

175000

185000

195000

205000

215000

225000

235000

245000

255000

265000

275000

285000

295000

305000

315000

325000

335000

345000

355000

365000

375000

385000

395000

405000

415000

425000

435000

445000

455000

465000

475000

485000

495000

505000

515000

525000

535000

545000

555000

565000

575000

585000

595000

605000

615000

625000

635000

645000

655000

665000

675000

685000

695000

705000

715000

725000

735000

745000

755000

765000

775000

785000

795000

805000

815000

825000

835000

845000

855000

865000

875000

885000

895000

905000

915000

925000

935000

945000

955000

965000

975000

985000

995000

1005000

1015000

1025000

1035000

1045000

1055000

1065000

1075000

1085000

1095000

1105000

1115000

1125000

1135000

1145000

1155000

1165000

1175000

1185000

1195000

1205000

1215000

1225000

1235000

1245000

1255000

1265000

1275000

1285000

1295000

1305000

1315000

1325000

1335000

1345000

1355000

1365000

1375000

1385000

1395000

1405000

1415000

1425000

1435000

1445000

1455000

1465000

1475000

1485000

1495000

1505000

1515000

1525000

1535000

1545000

1555000

1565000

1575000

1585000

1595000

1605000

1615000

1625000

1635000

1645000

1655000

1665000

1675000

1685000

1695000

1705000

1715000

1725000

1735000

1745000

1755000

1765000

1775000

1785000

1795000

1805000

1815000

1825000

1835000

1845000

1855000

1865000

1875000

1885000

1895000

1905000

1915000

1925000

1935000

1945000

1955000

1965000

1975000

1985000

1995000

2005000

2015000

2025000

2035000

2045000

2055000

2065000

2075000

2085000

2095000

2105000

2115000

2125000

2135000

2145000

2155000

2165000

2175000

2185000

2195000

2205000

2215000

2225000

2235000

2245000

2255000

2265000

2275000

2285000

2295000

2305000

2315000

2325000

2335000

2345000

2355000

2365000

2375000

2385000

2395000

2405000

2415000

2425000

2435000

2445000

2455000

2465000

2475000

2485000

2495000

2505000

2515000

2525000

2535000

2545000

2555000

2565000

2575000

2585000

2595000

2605000

2615000

2625000

2635000

2645000

2655000

2665000

2675000

2685000

2695000

2705000

2715000

2725000

2735000

2745000

2755000

2765000

2775000

2785000

2795000

2805000

2815000

2825000

2835000

2845000

2855000

2865000

2875000

2885000

2895000

2905000

2915000

2925000

2935000

2945000

2955000

2965000

2975000

2985000

2995000

3005000

3015000

3025000

3035000

3045000

3055000

3065000

3075000

3085000

3095000

3105000

3115000

3125000

3135000

3145000

3155000

3165000

3175000

3185000

3195000

3205000

3215000

3225000

3235000

3245000

3255000

3265000

3275000

3285000

3295000

3305000

3315000

3325000

3335000

3345000

3355000

3365000

3375000

3385000

3395000

3405000

3415000

3425000

3435000

3445000

3455000

3465000

3475000

3485000

3495000

3505000

3515000

3525000

3535000

3545000

3555000

3565000

3575000

3585000

3595000

3605000

3615000

3625000

3635000

3645000

3655000

3665000

3675000

3685000

3695000

3705000

3715000

3725000

3735000

3745000

3755000

3765000

3775000

3785000

3795000

3805000

3815000

3825000

3835000

3845000

3855000

3865000

3875000

3885000

3895000

3905000

3915000

3925000

3935000

3945000

3955000

3965000

3975000

3985000

3995000

4005000

4015000

4025000

4035000

4045000

4055000

4065000

4075000

4085000

4095000

4105000

4115000

4125000

4135000

4145000

4155000

4165000

4175000

4185000

4195000

4205000

4215000

4225000

4235000

4245000

4255000

4265000

4275000

4285000

4295000

4305000

4315000

4325000

4335000

4345000

4355000

4365000

4375000

4385000

4395000

4405000

4415000

4425000

4435000

4445000

4455000

4465000

4475000

4485000

4495000

4505000

4515000

4525000

4535000

4545000

4555000

4565000

4575000

4585000

4595000

4605000

4615000

4625000

4635000

4645000

4655000

4665000

4675000

4685000

4695000

4705000

4715000

4725000

4735000

4745000

4755000

4765000

4775000

4785000

4795000

4805000

4815000

4825000

4835000

4845000

4855000

4865000

4875000

4885000

4895000

4905000

4915000

4925000

4935000

4945000

4955000

4965000

4975000

4985000

4995000

5005000

5015000

5025000

5035000

5045000

5055000

5065000

5075000

5085000

5095000

5105000

5115000

5125000

5135000

5145000

5155000

5165000

5175000

5185000

5195000

5205000

5215000

5225000

5235000

5245000

5255000

5265000

5275000

5285000

5295000

5305000

5315000

5325000

5335000

5345000

5355000

5365000

5375000

5385000

5395000

5405000

5415000

5425000

5435000

5445000

5455000

5465000

5475000

5485000

5495000

5505000

5515000

5525000

5535000

5545000

5555000

5565000

5575000

5585000

5595000

5605000

5615000

5625000

5635000

5645000

5655000

5665000

5675000

5685000

5695000

5705000

5715000

5725000

5735000

5745000

5755000

5765000

5775000

5785000

5795000

5805000

5815000

5825000

5835000

5845000

5855000

5865000

5875000

5885000

5895000

5905000

5915000

5925000

5935000

5945000

5955000

5965000

5975000

5985000

5995000

6005000

6015000

6025000

6035000

6045000

6055000

6065000

6075000

6085000

6095000

6105000

6115000

6125000

6135000

6145000

6155000

6165000

6175000

6185000

6195000

6205000

6215000

6225000

6235000

6245000

6255000

6265000

6275000

6285000

6295000

6305000

6315000

6325000

6335000

6345000

6355000

6365000

6375000

6385000

6395000

6405000

6415000

6425000

6435000

6445000

6455000

6465000

6475000

6485000

6495000

6505000

6515000

6525000

6535000

6545000

6555000

6565000

6575000

6585000

6595000

6605000

6615000

6625000

6635000

6645000

6655000

6665000

6675000

6685000

6695000

6705000

6715000

6725000

6735000

6745000

6755000

6765000

6775000

6785000

6795000

6805000

6815000

6825000

6835000

6845000

6855000

6865000

6875000

6885000

6895000

6905000

6915000

6925000

6935000

6945000

6955000

6965000

6975000

6985000

6995000

7005000

7015000

7025000

7035000

7045000

7055000

7065000

7075000

7085000

7095000

7105000

7115000

7125000

7135000

7145000

7155000

7165000

7175000

7185000

7195000

7205000

7215000

7225000

7235000

7245000

7255000

7265000

7275000

7285000

7295000

7305000

7315000

7325000

7335000

7345000

7355000

7365000

7375000

7385000

7395000

7405000

7415000

7425000

7435000

7445000

7455000

7465000

7475000

7485000

7495000

7505000

7515000

7525000

7535000

7545000

7555000

7565000

7575000

7585000

7595000

7605000

7615000

7625000

7635000

7645000

7655000

7665000

7675000

7685000

7695000

7705000

7715000

7725000

7735000

7745000

7755000

7765000

7775000

7785000

7795000

7805000

7815000

7825000

7835000

7845000

7855000

7865000

7875000

7885000

7895000

7905000

7915000

7925000

7935000

7945000

7955000

7965000

7975000

7985000

7995000

8005000

8015000

8025000

8035000

8045000

8055000

8065000

8075000

8085000

8095000

8105000

8115000

8125000

8135000

8145000

8155000

8165000

8175000

8185000

8195000

8205000

8215000

8225000

8235000

8245000

8255000

8265000

8275000

8285000

8295000

8305000

8315000

8325000

8335000

8345000

8355000

8365000

8375000

8385000

8395000

8405000

8415000

8425000

8435000

8445000

8455000

8465000

8475000

8485000

8495000

8505000

8515000

8525000

8535000

8545000

8555000

8565000

8575000

8585000

8595000

8605000

8615000

8625000

8635000

8645000

8655000

8665000

8675000

8685000

8695000

8705000

8715000

8725000

8735000

8745000

8755000

8765000

8775000

8785000

8795000

8805000

8815000

8825000

8835000

8845000

8855000

8865000

8875000

8885000

8895000

8905000

8915000

8925000

8935000

8945000

8955000

8965000

8975000

8985000

8995000

9005000

9015000

9025000

9035000

9045000

9055000

9065000

9075000

9085000

9095000

9105000

9115000

9125000

9135000

9145000

9155000

9165000

9175000

9185000

9195000

9205000

9215000

9225000

9235000

9245000

9255000

9265000

9275000

9285000

9295000

9305000

9315000

9325000

9335000

9345000

9355000

9365000

9375000

9385000

9395000

9405000

9415000

9425000

9435000

9445000

9455000

9465000

9475000

9485000

9495000

9505000

9515000

9525000

9535000

9545000

9555000

9565000

9575000

9585000

9595000

9605000

9615000

9625000

9635000

9645000

9655000

9665000

9675000

9685000

9695000

9705000

9715000

9725000

9735000

9745000

9755000

9765000

9775000

9785000

9795000

9805000

9815000

9825000

9835000

9845000

9855000

9865000

9875000

9885000

9895000

9905000

9915000

9925000

9935000

9945000

9955000

9965000

9975000

9985000

9995000

10005000

10015000

10025000

10035000

10045000

10055000

10065000

10075000

10085000

10095000

10105000

10115000

10125000

10135000

10145000

10155000

<



# Pearl athletes sign for next level sports

Special to SW Rankin News

On National Signing Day, eight Pearl

High School (PHS) seniors signed letters of intent to play football at the next level.



PHS senior Sam Brumfield signed with Northwest Community College. Pictured (l to r) are, front row: sister Sambreanna Brumfield, grandfather George Coney, Sam Brumfield, mother Bernadette Brumfield and sister Samya Brumfield; and back row: Coach John Perry, aunt Verna Henderson, Coach Justin Hunter and Coach Nathaniel Worrell.



PHS senior Davion Carter signed with Northwest Community College. Pictured (l to r) are, front row: grandmother Barbara Paxton, father Bobby Carter, Davion Carter, mother Brandi Carter and grandfather Larry Paxton; and back row: Coach John Perry, Coach Nathaniel Worrell and Coach Justin Hunter.



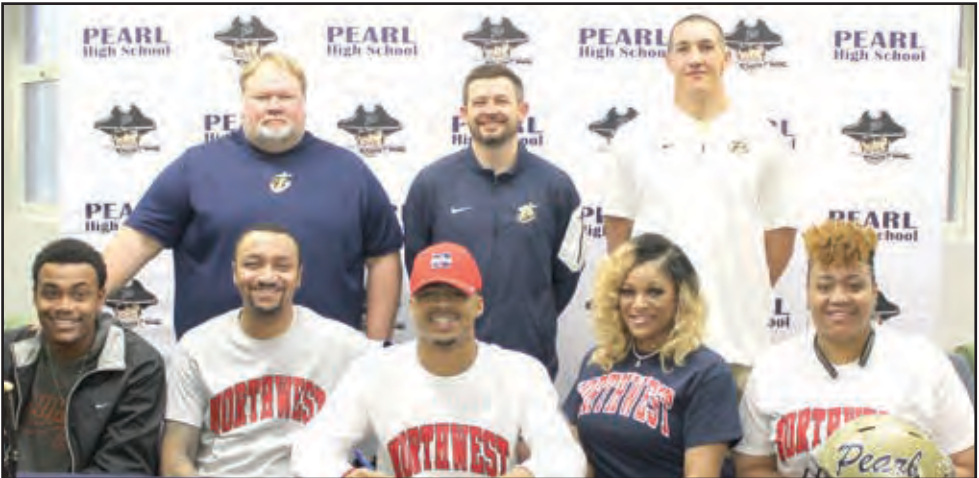
PHS senior Austin Mitchell signed with Mississippi Delta Community College. Pictured (l to r) are, front row: cousin Colby Spence, mother Sherri Mitchell, Austin Mitchell, step-dad Ramone Mitchell and step-brother Gavin Mitchell; and back row: Coach John Perry, Coach Nathaniel Worrell and Coach Justin Hunter.



PHS senior Trey Davis signed with Mississippi Delta Community College. Pictured (l to r) are, front row: mother Stacy Prophet, Trey Davis and sister Kennedy Davis; and back row: Coach John Perry, Coach Justin Hunter and Coach Nathaniel Worrell.



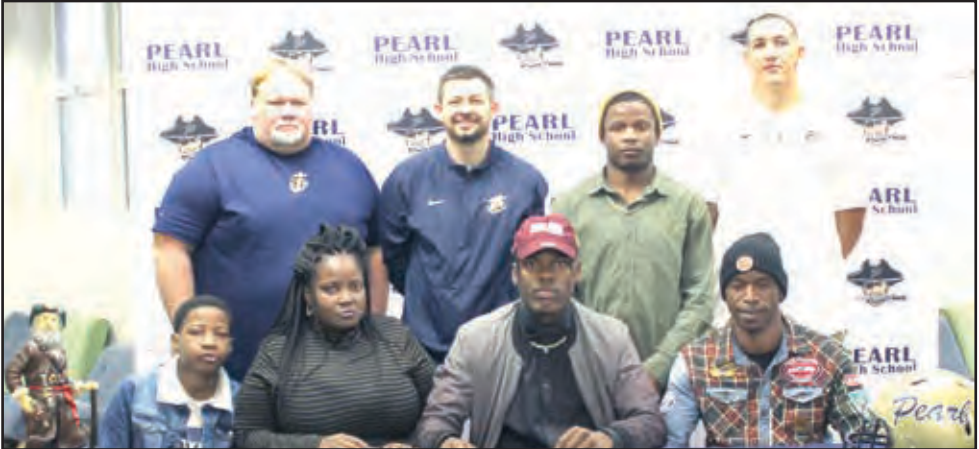
PHS senior Kaleb Cadiere signed with Holmes Community College. Pictured (l to r) are, front row: grand-father Ronnie Silence, mother Karen Cadiere, Kaleb Cadiere and father Kevin Cadiere; and back row: Coach John Perry, grandmother Joanne Cadiere, sister Kelsey Cadiere, grandfather Bobby Cadiere, Coach Nathaniel Worrell and Coach Justin Hunter.



PHS senior Kenyatta Harrell signed with Northwest Community College. Pictured (l to r) are, front row: cousin Hiram Wilson, dad Calvin Harrell, Kenyatta Harrell, mom April Harrell and aunt Kelli Harrell; and back row: Coach John Perry, Coach Justin Hunter and Coach Nathaniel Worrell.



PHS senior Davion Carter signed with Northwest Community College. Pictured (l to r) are, front row: grandmother Barbara Paxton, father Bobby Carter, Davion Carter, mother Brandi Carter and grandfather Larry Paxton; and back row: Coach John Perry, Coach Nathaniel Worrell and Coach Justin Hunter.



PHS senior Jeremiah Gill signed with Pearl River Community College. Pictured (l to r) are, front row: brother Cazzerrick Gill, mom Janetta Gill, Jeremiah Gill and father Derrick Gill; and back row: Coach John Perry, Coach Justin Hunter, brother Derrick Maddox and Coach Nathaniel Worrell.

Photos special to SW Rankin News



# Richland's Big Fix Clinic re-opens for business

Special to SW Rankin News

After being closed for over a month during spring breeding season, the Big Fix Clinic has re-opened its' doors. The reopening is due, in large part, to the generous donations of hand-made masks from various local volunteers.

Erring on the side of caution, The Clinic has updated their operating procedures and equipment in an effort to keep staff and clients safe. Due to increased risk, however, the transport program will not resume until June, at the earliest.

The Clinic is aware that there will be many more puppies and kittens than there would have been otherwise, so the goal remains to continue focusing on prevention by providing spay and neuter and working harder than ever to make up for lost time.



Special to SW Rankin News

The Big Fix Clinic looks forward to serving the community again.

For more information, contact the Big Fix Clinic via phone call 601-420-2438 or email [bigfixclinic@msspan.org](mailto:bigfixclinic@msspan.org).

## Working At Home With Kids

OK, so you have everything you need, right? You'll be busy working on that project?

Yes!

This is perfect! I finally have a stretch of quiet time!

Oh, what a wonderful treat to be able to work without any interrup...

I'M DONE!

©Adrienne Hedger

[www.HedgerHumor.com](http://www.HedgerHumor.com)

**WIN \$25!\***

**\*Winner will receive a \$25 gift certificate from ChixChicken & Chopz at the Outlets of Mississippi in Pearl.**

**THE FLORENCE NEWS THE RICHLAND NEWS**  
**Pearl News**

In one advertisement in this issue, we've placed this newspaper image. **NEWS** Find it, write the advertiser's name and the page number where you found it below, and mail this form to the indicated address. A drawing will be held to determine our winner from all correct entries received by March 20, 2020. There will be one winner per each issue in which this contest entry form appears. One entry per household per issue, please.

**WINNER FOR APRIL...PEGGIE CHANDLER**  
**CALL 601-990-9511 TO COLLECT YOUR PRIZE.**

Write the advertiser and the page number. \_\_\_\_\_

Name: \_\_\_\_\_ Address: \_\_\_\_\_

City: \_\_\_\_\_ State: \_\_\_\_\_ Zip: \_\_\_\_\_ Phone: \_\_\_\_\_

Email: \_\_\_\_\_

Mail entries to:  
P.O. Box 5963  
Pearl, MS 39208

Announcing the Rankin County Law Practice:

# THE GILLIAM FIRM, PLLC

Vicki L. Gilliam\*, Attorney at Law  
Licensed to Practice Law Since 1993

Located on the Square in Brandon  
106 Town Square, Brandon, MS 39042

Practicing in the Litigation areas of:

- Criminal Defense (Madison & Rankin)
- Personal Injury (Car or Big Truck Wrecks)
- Wrongful Death of Loved Ones
- Estate/Probate Disputes
- Small Business Disputes/Claims
- Disputes with Insurance Companies
- Worker's Compensation
- Real Estate Disputes

Check out our website and case results:  
[gilliamfirm.com](http://gilliamfirm.com)

\*Vicki L. Gilliam is licensed to practice law in Mississippi, Alabama, Arkansas, Texas, and The United States Supreme Court.

Call or text: (601) 488-4044 • [gilliam@gilliamfirm.com](mailto:gilliam@gilliamfirm.com)

# BUSINESS SPOTLIGHT DIRECTORY

**TOMMY MILES**  
AGENCY PRINCIPAL

**TRI-COUNTY INSURANCE AGENCY**  
89 HWY 481 SOUTH  
MORTON, MS 39117

Phone: (601) 732-6769  
Fax: (601) 732-8777  
Email: [insurant@bellsouth.net](mailto:insurant@bellsouth.net)

Master Card American Express Discover VISA

**Crossgates Jewelers, Inc.**  
Tammy & Gerald Frazier  
Owners

(601) 939-9313 401 Cross Park Drive  
Watch & Jewelry Repair Suite A  
Custom Design Pearl, MS 39208

**Specialty Tree Service LLC**  
601-405-5857

Specializing in large and dangerous tree removal

**Free Estimates!**

Gabe Walters  
601-405-5857

**Tree Removal • Tree Trimming  
Stump Grinding • Lot Clearing  
Debris Removal**



# Waste Management encourages continued recycling

Special to SW Rankin News

Facial tissues, toilet paper, hand sanitizer and disinfectant wipes have been flying off store shelves, while families are spending more hours at home to stay healthy and safe during the COVID-19 coronavirus pandemic. Waste Management (WM) is calling on everyone to *Recycle Right* during this time when recyclables are needed more than ever. Recycling is vitally important to the environment, and it has come to play a critical role in certain manufacturing supply chains. Without recyclable materials collected from homes and businesses, WM customers, who produce products such as tissue, toweling and packaging boxes for grocery and medical supplies, would not have the raw materials that they need to manufacture these important items. Recycling is an essential service for manufacturing companies delivering these key products.

"Most recyclers don't think about the importance of placing their clean recyclable materials in their bins, but now it is more important than ever, as recyclable products are playing a critical role for key manufacturing businesses," said Brent Bell, Waste Management vice president of recycling. "Across North America, people are generating more



Special to SW Rankin News

household garbage and recyclable materials than usual, and manufacturers are in need of more clean recyclable materials to meet their demands for making basic goods and emergency supplies. We can all do our part by recycling right during these challenging times."

The following tips are essential in the proper selection and condition of recyclables:

First, recycle the following items only if they are clean, dry and loose:

cardboard (without inside packing materials); paper products including newspapers, junk mail, office/school paper; paperboard, such as cereal and cracker boxes; plastic bottles and jugs and steel, tin and aluminum cans.

Secondly, throw away the following items which are not suitable for recycling: plastic, latex and cloth disposable gloves, disposable masks; liquid soap and hand sanitizer bottles that contain residue; disinfectant wipes; facial tis-

sues, napkins and paper towels; disposable plates, cups and cutlery; takeout containers; leftover food and liquids; plastic bags and plastic film wrap and hoses, cords, polystyrene foam and other packaging.

In addition, several leading industry organizations have weighed in, calling for increased recycling to meet the needed demand during this time, including: The American Forest and Paper Association, The Association of Plastic Recyclers, The Institute of Scrap Recycling Industries, The Glass Packaging Institute and The Recycling Partnership. Waste Management is the leading provider of comprehensive waste management environmental services in North America. Through its subsidiaries, the Company provides collection, transfer, disposal services, and recycling and resource recovery. It is also a leading developer, operator and owner of landfill gas-to-energy facilities in the United States. The Company's customers include residential, commercial, industrial, and municipal customers throughout North America.

To learn more information about Waste Management as well as about Waste Management Recycle Right tips, visit [wm.com/recycleright](http://wm.com/recycleright), [www.wm.com](http://www.wm.com) or [www.thinkgreen.com](http://www.thinkgreen.com).

OUR MISSION:

*your Calling.*

MISSISSIPPI COLLEGE

*A Christian University*

5,100

UNIQUE STUDENTS WITHIN OUR COMMUNITY

80+

UNDERGRADUATE DEGREE PROGRAMS

\$15,000

LESS THAN THE AVERAGE PRIVATE UNIVERSITY

WE'RE WORTH *exploring!*

[mc.edu/inquire](http://mc.edu/inquire)

Mississippi College has been integrating faith and education for nearly two centuries, striving to transform students intellectually, socially, and spiritually. At MC, you will be equipped to positively affect the world around you. Whatever your purpose, aspiration, or vocation, at MC, you will be prepared to fulfill Your Calling.

admissions@mc.edu 601/925-3800 mc.edu

f t t s i



## CMRLS continues to serve community

*Special to SW Rankin News*

All branches of the Central Mississippi Regional Library System (CMRLS) are currently closed to the public, but many of the library's digital resources are still available online during this time of social distancing.

CMRLS has created a remote "digital library card" sign-up option to ensure that library cards can be issued to those who want to access digital materials and services while they are at home. To sign up for a digital library card, or to reset the PIN number on an existing library card account, users can visit [cmrls.lib.ms.us](http://cmrls.lib.ms.us) and click on the tab "Services" and be directed to complete the online application.

The library has a Virtual Reference Collection page, located at <https://cmrls.lib.ms.us/digital-library/virtual-reference-collection>, to make it easy for users to access all its digital content in one place. Regular updates are posted to this page, including links to additional free educational and informational content. Users will also find links to the library's Axis360 eBook service and Freading where card holders can access eBooks, eAudiobooks, music, and more.

Library staff members will be working to possibly offer virtual children's story times, and regular updates to its social media pages to share useful and interesting content. Virtual story times will be available through the library's Facebook page and Instagram pages. Users can find the library on Facebook (CMRLS Libraries), Twitter (CMRLSLibrary), Twitter (CMRLSTeen) Pinterest (CMRLSLibrary), Flickr (CMRLS Photos), Instagram (CMRLSLibraries).

CMRLS also wants library users to know that no overdue fines will be

charged during the library's closure. Library book drops are also closed, and patrons are being asked to keep their checked-out materials until the library reopens.

"Acting on advice and recommendations from the CDC, Governor Tate Reeves, the Mississippi Library Association, and Mississippi Library Commission, nearly all public library systems in the State of Mississippi are currently closed," said CMRLS Executive Director Mara Villa Polk. "Even so, the decision to close was a tremendously difficult one to make, and we really miss our patrons. I am proud of our library team



*Special to SW Rankin News*

member's efforts as they continue to engage with the community in a safe and responsible way, while working to improve and adapt library services during this crisis."

The Central Mississippi Regional Library System serves Rankin, Scott, Simpson and Smith Counties. Patrons can contact the library via email at: [custsvc@cmrls.lib.ms.us](mailto:custsvc@cmrls.lib.ms.us) or by calling 601-825-0100.



**Congratulations!**  
**Amber Cook**

**Richland High School Class of 2020**

Young woman, my daughter, my joy and my heart  
you taught me unconditional love from the very start.  
It seems just yesterday that I held your frightened little hand  
as you started kindergarten and made new friends.

And now today a new chapter of life begins,  
as your childhood and your simple life comes to an end.  
The world sees the young woman you have grown to be  
with her charm, her smile, and own personality.

Thirteen years of school has come and gone  
and soon you will begin a life of your own.  
My prayer for you is that God leads the way  
so pray to Him daily, He won't let you stray.

Each worthy dream, within your heart  
each goal that you pursue  
is understood and shared by God  
He wants victory for you.

If the desires of your heart are right  
and you seek His will  
you'll find that special purpose  
you were put here to fulfill.

So pursue those dreams, achieve your goals  
have faith each will come true  
because they are also shared by Him  
He wants victory for you.

May He bless you and guide you in all that you do  
through good times and bad He will be there for you.  
The love in my heart for you is so strong  
it's there forever right where it belongs.

It's time for you now to prosper and grow,  
but before you start I want you to know  
behind this young woman, I will always see  
my beautiful daughter, my child, my baby.

Love Always, Mom

Trust in the Lord with all your heart;  
lean not on your own understanding.  
In all your ways submit to Him,  
and He will make your path straight.  
Proverbs 3:5-6



**Connect with our Healthcare Professionals via Telehealth.**



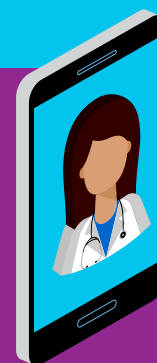
Consult with our clinic remotely using our live real-time technology.



To schedule your online Telehealth appointment call our clinic or visit our website.



Simple and convenient to use. Just use a browser on a computer or mobile device with a camera and microphone.



**Corner Clinic (601) 992-0004**

[cornerclinicurgentcare.com](http://cornerclinicurgentcare.com) ■ [cornerclinic.doxy.me](http://cornerclinic.doxy.me)

132 Lakeland Heights Blvd. ■ Flowood

Monday-Friday 8am-8pm ■ Saturday 9am-6pm ■ Sunday 1pm-6pm

**Rebecca Rose Flea Market**  
"Let Us Change Your Mind About What a Flea Market Can Be"

Awesome place to find  
that hidden treasure.  
Clean, organized and friendly service,  
Indoors with great prices and a large selection.

815 Hwy 49 S, Richland, MS  
Cash, Checks, Credit & Debit cards accepted

**601-936-0058**  
Hours: 10:00am - 4:30pm Tue. - Sat.



# M-Braves partners with MiLB to launch "CommUNITY First Campaign"

Special to SW Rankin News

The Mississippi Braves recently announced they are joining MiLB CommUNITY First, a new national initiative developed by Minor League Baseball, in conjunction with Feeding America® and the Mississippi Food Network to raise funds for local food banks and to honor individuals risking their lives on the front lines of the COVID-19 pandemic.

M-Braves fans are encouraged to visit [MiLB.com/CommUNITYFirst](http://MiLB.com/CommUNITYFirst) through May 31 to donate. Once on the site, fans can choose their donation amount and the Mississippi Braves as the recipient of their donation to direct funds to the Central Mississippi community. For every \$10 donated, the M-Braves will donate one ticket to a future home game this season or in 2021 to a local hero of the pandemic.

"The Central Mississippi community is known for rallying around those that are in need. The M-Braves, together with our fans, look forward to partnering with MiLB CommUNITY First, Feeding America and our friends at the Mississippi Food Network on this important initiative."

School closures, rising unemployment and rising poverty due to quarantine and



Special to SW Rankin News

extended stay-at-home orders have disproportionately impacted people already at risk of hunger and could result in an estimated additional 17.1 million people experiencing food insecurity in the next six months, according to Feeding America. As the nation's largest domestic hunger-relief organization with a network of more than 200 affiliates, Feeding America has projected a \$1.4 billion shortfall in the next six months alone.

In response, contributions from Mississippi Braves fans and Minor League Baseball will help ensure families and individuals across the country most impacted by the pandemic are fed and cared for during these uncertain times. Local residents can join the national campaign by donating and selecting MISSISSIPPI BRAVES at [MiLB.com/CommUNITY-First](http://MiLB.com/CommUNITY-First) and using #MiLBCommUNITY-First on social media to show support.

Kim Gross, FNP, PMHNP, can treat your entire family for everything from minor emergencies to chronic disease management and preventive care. Kim is also certified to manage behavioral health medications and other treatment options. Our services and treatments include:

- Minor injuries, including cuts, sprains and strains
- Common illnesses, including cold, cough, flu and sore throat
- Annual wellness exams
- Sports and employment physicals
- Medication management for depression, anxiety, schizophrenia and bipolar disorder

**NEWS**

**Merit Health**  
Medical Group

348 Crossgates Blvd.  
Suite 1500  
Brandon, MS 39042

[MyMeritDoctor.com](http://MyMeritDoctor.com)

For more information or to schedule an appointment, call **601-824-2236**.

Walk-ins and same-day appointments are available.

Member of the Allied Health Staff at Merit Health Rankin.

*Katelin Chandler  
Class of 2020  
Florence High School*

*"Congratulations Katelin! I wish you the best of fortune, happiness and love.  
Love Dad"*

*Katelin plans to attend Hinds Community College before pursuing a Forensic degree at University of Southern Mississippi.*

*Claudia Hemphill  
Photography*



FHS's JROTC battalion visits Camp Shelby



Special to The Pearl News

Special to SW Rankin News

On March 6, Florence High School's JROTC battalion took a field trip to the Camp Shelby Joint Forces Training Site. Cadets were given a tank demonstration, courtesy of the Camp Shelby soldiers, and had the opportunity to get inside some of the latest armored vehicles in the Army inventory. The cadets also visited the Mis-

issippi Armed Forces museum, where they were able to see older generation tanks and aircraft that were on display. They also viewed items from previous historic battles dating from the Revolutionary War up to the current wars in Iraq and Afghanistan. The battalion field trip was an excellent opportunity for cadets to understand and appreciate the history of the United States soldiers.

Florence's JROTC compete at Pine Belt Pentathlon

Special to SW Rankin News

On March 7, Florence High School's JROTC PT team traveled to Petal High School for the Pine Belt Pentathlon. They competed in a push-up and sit-up competition, a team distance run, a casualty evacuation competition, a logistics resupply race, a Humvee push and an obstacle course. The cadets placed first in the casualty evacuation competition and second in the logistics resupply race.



Special to The Pearl News

Cadets Christina Guzman, Emily Hoffman, Dylan McLain and J.J. McQueen carry their teammate in the casualty evacuation competition.

Serving Pearl and Rankin County for more than 30 years.

**ANDY EATON**  
INSURANCE AGENCY

Home & Auto Insurance

Office: 3170 Hwy 80 E  
Pearl, MS 39208  
Contact: (601) 939-0102

Fax: (601) 936-9515  
Aeaton9300@aol.com  
Hours: Monday – Friday  
8:30AM – 5:00PM



Helping Clinton Seniors Remain Independent In Their Homes Since 2001.

- Companionship
- Meal Preparation
- Household Duties
- Hospice Care Support Services
- Personal Care
- Transportation
- Respite Care

Call for a free, no-obligation appointment  
**601.926.1181**

**Home Instead**  
SENIOR CARE®  
*To us, it's personal.*

HomeInstead.com/396

**This Memorial Day**  
*Remember & Honor*

**PEARL LOCATION**

Facebook.com/Stowawaypearl  
4195 Highway 80 E.  
Pearl, MS 39208  
**601-939-3255**

10% Discount For The Following:  
-Oak Lake and Grove Acres Residents  
-Multi-Unit (3 or more units)  
-First Responder  
-Military



**STOWAWAY**  
**SELF-STORAGE**



**RICHLAND LOCATION**

Facebook.com/Stowawayrichland  
133 Center Street  
Richland, MS 39218  
**601-939-5007**

10% Discount For The Following:  
-Stoney Creek Residents  
Multi-Unit (3 or more units)  
-First Responder  
-Military



# Legal Aid attorneys are available by phone

*Special to SW Rankin News*

The Access to Justice Commission and two Legal Services agencies recently announced that free legal aid providers are available to assist low income people with civil legal needs like family law, housing and consumer issues.

The COVID-19 pandemic forced Legal Services to close its physical offices to the public, but Legal Services attorneys are available by telephone to assist low income people. The statewide hotline for Legal Services is 1-800-498-1804.

North Mississippi Rural Legal Services is staffed by seventeen attorneys who represent clients in thirty-nine counties in the northern half of the state. The Mississippi Center for Legal Services is staffed by twenty-one attorneys who represent clients in forty-three counties, covering the southern half of the state.

Civil legal assistance may include matters such as bankruptcy, debt collections, evictions, foreclosure defense, education issues, employment issues, divorce, child support, adoptions, guardianships, domestic violence, elder abuse, expungements, emancipation of minors, powers of attorney and wills. Legal Services attorneys also may assist with issues such as denial of public assistance

benefits, Medicaid and Medicare.

The pandemic is expected to increase the need for legal aid for the poor. "About a fourth of our population lived at or below the poverty level before this pandemic began," said Nicole McLaughlin, executive director of the Access to Justice Commission. "What's going to happen is that indigent population is going to grow so much that the need is going to be great. What we want people to know is there are options for free legal aid in Mississippi and those offices are open and they are ready to assist."

The income threshold to qualify for assistance from a Legal Services attorney is 125 percent of federal poverty guidelines. That's an individual annual income of less than \$15,950, a two-person household earning less than \$21,550 annually, a family of three living on less than \$27,150, a family of four with annual earnings of less than \$32,750. There are

circumstances in which eligibility can be up to 200 percent of the federal poverty level. There is no income cap for services involving domestic violence.

Access to Justice and Legal Services officials want to make the public aware of the availability of assistance, since Legal Services' ordinary means of public outreach has been halted due to the pandemic. Public educational forums on topics such as domestic violence, sexual assault, elder abuse and housing rights ceased, according to Mississippi Center for Legal Services Executive Director Sam H. Buchanan Jr. North Mississippi Rural Legal Services ceased doing community presentations regarding taxes, foreclosure prevention, wills and power of attorney, said Executive Director Ben T. Cole II.

Buchanan said, "Any time there is a loss of income or loss of resources, it often times results in an increase in legal needs. It's a lot more difficult because

we can't reach out to organize and go into the community to let people know about the services." Outreach efforts now rely on social media.

Phone calls from people seeking assistance have declined to Legal Services and the Access to Justice Commission. The Legal Services call intake center closed for two weeks while Legal Services reorganized staff to work from home. Calls did not resume at their previous level after the call center reopened. Buchanan and Cole said their offices are eerily quiet. They believe the actual needs are increasing, but people may not know where to seek help.

Cole said, "We do expect to see an increase in evictions, various consumer matters, abuse and domestic violence cases." They may also see an increase in people seeking wills and powers of attorney.

McLaughlin said, "I think people are still trying to survive and figure out what to do. A lot of times people don't recognize the problems they are facing as legal issues."

The statewide hotline for Legal Services is 1-800-498-1804. For more information, go to the Legal Services website at [MsLegalServices.org](http://MsLegalServices.org), or the Access to Justice Commission website at [Msatjc.org](http://Msatjc.org).



*Special to SW Rankin News*

## REVELL ACE Hardware

# WE ARE OPEN And Here To Help



STOP BY AND  
SHOP IN PERSON



BUY ONLINE AND  
PICKUP IN STORE



BUY ONLINE AND GET  
FREE CURBSIDE PICKUP

**2509 Highway 80 E, Pearl, Mississippi**  
**1899 Highway 49 S, Florence, Mississippi**  
[www.RevellHardware.com](http://www.RevellHardware.com) • [www.RevellOutdoor.com](http://www.RevellOutdoor.com)