

INSIDE THIS ISSUE

Pelahatchie VFD receives \$2,500 grant - pg. 3

Great strides through tough circumstances - pg. 11

Pelahatchie man in first indictments of poultry managers

Special to Pelahatchie News

A federal grand jury in the Southern District of Mississippi has indicted four managers or supervisors or human resource officers stemming from the raid last September that saw 680 illegal alien employees detained. The indictments were based on information collected through criminal and administrative search warrants that were executed during the highly publicized raid of Mississippi poultry companies. It was the largest single-state worksite enforcement operation in U.S. history, resulting in the prosecution of 119 illegal aliens for stealing the identities of American citizens, falsifying immigration documents, fraudulently claiming to be United States citizens, and illegal re-entering the country after they were deported, among other federal crimes.

Salvador Delgado-Nieves, 57, of Pelahatchie was charged with three counts of harboring illegal aliens, three counts of assisting illegal aliens in falsely

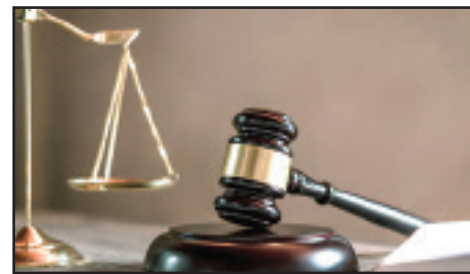
representing themselves to be United States citizens, three counts of assisting illegal aliens in obtaining false Social Security cards, and one count of making a false statement to law enforcement officials when he denied having hired illegal aliens at A&B, Inc. in Pelahatchie.

Delgado-Nieves faces up to 74 years in federal prison and \$2.5 million in fines for these criminal violations, as counts one through six carry a maximum of ten years in prison and a \$250,000 fine for each violation, counts seven through nine carry a maximum of three years in prison and a \$250,000 fine for each count, and count ten carries a maximum of five years in prison and a \$250,000 fine.

The four unsealed indictments mark the first criminal actions against poultry company management personnel and is limited to two companies, A&B Inc. of Pelahatchie and Pearl River Foods, LLC.

"This office has a successful history of prosecuting employers for violating our immigration laws, and today marks another step in ensuring that justice is

fairly and impartially done, no matter the law-breaker. I want to thank our partners at ICE Homeland Security Investigations and our office's federal prosecutors for doggedly pursuing these criminal violations. The indictments unsealed today mark the beginning, not the end,



Special to Pelahatchie News

of our investigations and prosecutions. Rest assured that we will continue to pursue criminal wrongdoers and enforce our criminal laws wherever the evidence may take us," said U.S. Attorney Mike Hurst.

"The results of this ongoing criminal investigation illustrate the importance of strong interior enforcement. The arrests made last year pursuant to

U.S. Immigration and Customs Enforcement's execution of more than a dozen search warrants have thus far yielded 126 indictments, 117 criminal arrests, and 73 convictions. In total, more than 403 individuals falsified social security information in order to gain illegal employment in the United States," said acting ICE deputy director and senior official performing the duties of the director Matthew T. Albence.

"Companies who intentionally or knowingly base their business model on an illegal workforce deprive law-abiding citizens and lawful immigrants of employment opportunities, which are especially critical as our economy looks to recover from the challenges faced by the COVID-19 pandemic. ICE Homeland Security Investigations will continue its commitment to uphold the laws Congress has passed. These laws protect jobs for the legal workforce, reduce incentives for illegal migration, and eliminate inequitable financial advantages for businesses employing illegal immigrants."

Edwards named to Rankin County's Top 40 Under 40

Special to Pelahatchie News

Misty Edwards was named an inaugural member of Rankin's Best of the Best Top 40 Under 40. Edwards is a commercial relationship manager and vice president with Trustmark National Bank, where she has worked for 20 years.

Winners were recognized at an awards luncheon on June 23 at the Brandon Municipal Complex. Nominations were solicited from the public, and the Top 40 were selected by a committee.

"I am most proud of being a part of making dreams into realities for businesses as they put their trust and confi-

continued on page 3



Photo by Pelahatchie News

Misty Edwards, a commercial relationship manager and vice president with Trustmark National Bank, was named an inaugural member of Rankin's Best of the Best Top 40 Under 40.

Praying for students, staff and teachers



Photos by Rachael Boyer

Citizens of Pelahatchie met on Thursday, September 13, for a Prayer Walk starting in front of the school. The group said, "As we embark on this new school year and the unknown, we would like to gather and pray for our school, students and staff for a successful school year."

**EastRankin**
FAMILY DENTAL
Dr. C. Stewart Strange
Dr. Chandler H. Pleasant
A CARING & FRIENDLY ATMOSPHERE

**TREATING CHILDREN,
ADULTS, AND SENIORS**
Accepting Insurance, Medicaid, CHIPs, and CareCredit
Cleanings • Fillings
Extractions • Whitening
Dentures • Crowns
Root Canals • Implants
and More

Monday 8a-7p, Wednesday 8a-5p
and every other Friday 8-12
601-854-7478
www.eastrankinfamilydental.com



Lady Patriots soccer off to a good start



Photo by Jade Huffman

East Rankin Lady Patriots lost a heart breaker by one point to Presbyterian Christian in Hattiesburg September 17. The Lady Patriots are 5-1 at the end of September. They won against Washington, MRA, Parklane, Park Place, and Central Hinds. Pictured is Madeline Logan for East Rankin in white.

Southern Pine and TEC collaborate to provide fiber internet in rural areas

Special to Pelahatchie News

Southern Pine Electric announced a collaborative agreement with TEC, a technology company providing fiber internet to people in rural areas of Mississippi, Alabama, Georgia, and Tennessee. TEC will bring fiber internet to many of Southern Pine's mem-

bers that are unserved or underserved. With an aggressive work schedule of ten years, TEC will bring innovative broadband,

voice and security solutions to members, communities, and businesses that lack access to true broadband services.

After much study and analysis, Southern Pine's board of directors made the decision to not become a service provider of high-speed internet due to financial constraints that could threaten the stability of the cooperative and its members. While this decision

ended Southern Pine's consideration of becoming a service provider, it did not diminish the desire for Southern Pine to play an active role in securing connectivity for our members.

Through the announcement of this collaboration, Southern Pine's board of directors and management team has made true on the promise to pursue a



Special to Pelahatchie News

sound broadband solution that protects their members' ownership in Southern Pine. "I am proud that TEC, which

is a company with deep roots in our state, recognizes what our members have to offer and is committed to improving their quality of life," said Don Jordan, President and CEO of Southern Pine Electric.

Members can visit southernpine.coop or TEC.com for more information or email voice@southernpine.coop if they have additional questions.



P.O. Box 771
Pelahatchie, MS 39145
Volume 9 Issue 9
Circulation - 3,600

Publisher
Clay Mansell
claymansell@pelahatchienews.com

Editor in Chief
Stephanie Tracy

Managing Editor/Sales
Susie A. Wolfe, (601) 566-1932 x2
news@pelahatchienews.com

Graphic Designer
Katie White, (601) 566-1932 x5
designer@pelahatchienews.com

Office Manager
Doris Bynum, (601) 566-1932 x0

For submission information, email news@pelahatchienews.com.

The Pelahatchie News is published on the first Tuesday of every month in Pelahatchie, MS.

Copyright 2020. All rights reserved. Materials may not be reproduced in whole or in part without written permission of the publisher.



Find us on Facebook

www.facebook.com/PelahatchieNews



FROM CHILDHOOD ASPIRATIONS TO A FULFILLING CAREER. Take the first step to an exciting nursing career. Visit MyMeritHealth.com or call our recruiter at 601.573.4254.

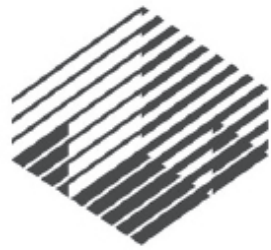


Submit & Announce Weddings & Births

Call Susie today to find out how to let your neighbors know about your good news.

601-706-9237





Trustmark
Banking and Financial Solutions

continued from page 1

Edwards named to Rankin County's Top 40 Under 40

dence in my ability to guide and direct them to achieve their goals," said Edwards. "I love watching my customers find happiness in their success!"

According to Edwards, "I started as a part-time teller while attending college. I then served as a retail support financial services representative/Consumer Loan Officer while studying for my Master of Business Administration from Belhaven College through their evening program."

"I was accepted into the Management Development Associate Program that allows you to spend time in every area of the bank. From there, I managed the Card Service Department, was Branch Manager of Crossgates, Madison 463 and Airpark, been Loan

Product and Pricing Manager in the Credit Department, worked in Compliance and am now a Relationship Manager producing business loans. I've literally worked in every Rankin County branch in addition to Northpark, Clinton Main, Jackson Main and the Day Centre."

She is a lifetime member of the Junior Auxiliary of Rankin County, ambassador for the Rankin County Chamber of Commerce, and she serves as a junior high Sunday school teacher at Cross Roads Baptist Church in Pelahatchie, where she and her husband, Brian, live with their children, Camden Patton; Kyndal Patton, and Dawson Edwards. Brian is the Industrial Maintenance teacher at Pelahatchie High School.

Pelahatchie VFD receives \$2,500 grant



Special to Pelahatchie News

The Pelahatchie Volunteer Fire Department (PVFD) received a \$2,500 grant from CenterPoint Energy last week. The money will be used to purchase a hose tester that will save wear and tear on the fire trucks as they test fire hoses under pressure. Pictured (l to r) are: Van Brun, CenterPoint Energy district operations manager; Karl VanHorn, PVFD chief; and Lewis Hollfield, CenterPoint Energy area manager.

www.facebook.com/fusionma
503 Second St., Pelahatchie, MS 39145
601-941-3937

Enrolling New Students!
DoJang completely cleaned and disinfected before each class.

Fusion

Martial Arts

A photo of a lifetime



Photo by Steve Massey

Steve Massey of Pelahatchie took this photo in mid-July in the Leesburg area.

ERCO hosts back-to-school event



Photos special to Pelahatchie News

Ever Reaching Community Outreach (ERCO) non-profit held a back-to-school giveaway event on September 1. In addition to school supplies, everyone attending received a Bible and prayer from one of the volunteer prayer warriors. Pictured in left photo is Angela Campbell Varnes with backpacks; and in right photo (l to r) front row, are: Lynn Wood, Linda Wilkinson, Linda Norsworthy (sitting), Gene Miller, Scott Walters and John Wood (front).

JELLYSTONE PARK™
Yogi Bear's
CAMP-RESORT Cable TV WiFi

Like us on facebook

FACILITIES

Cabins: Sleeps 6-12 w/wo Washroom & Kitchen	Game Room
Mini Golf	Activity Building
Playground	Cartoon Cafe
Outdoor Movies	Pavilion Rentals
Planned Activities	Golf Cart Rentals
	Water Park
	Mini Golf

YOGI ON THE LAKE
 143 Campground Road
 Pelahatchie, MS 39145
601-854-6621
www.Jellystonems.com
<https://www.facebook.com/YogiOnTheLake>

h
HOPPER PROPERTIES

Inventory is low, and the market is HOT! Call us today to buy or sell!

	Allison Palmer Broker Associate REALTOR® 601-506-1420		Mary Ann Roper Sales Associate REALTOR® 601-720-2002
---	--	---	---

HopperMS.com
 12 Woodgate Drive, Suite A, Brandon, MS 39042
 601-724-1435

PHS cheerleaders ready for football



Special to Pelahatchie News

The 2020-2021 Pelahatchie High School (PHS) football cheerleaders are ready for football season, which is scheduled to start at the end of September. Pictured (l to r) front row, are: Sarah Westbrook, Natalya Garner, Katie Belle Boyer, Collins Doster, Madi Holmes, Madelyn Cain, Madison Broome, and Haylee Atkinson; and back row: Malori Scherer, Maddie Grace Walters, Addison Archie, Meghan Herrington, Makenzie Hester, Isabella Rust, Erin Hanson, and Haley Mills.

CHECK OUT PELAHATCHIENEWS.COM! Our NEW Website.

More Good News You Can Use - ONLINE!



Beware of fall armyworms infestations



By Doug Carter,
Rankin County
Extension Agent

Special to
Pelahatchie News

Fall armyworms are the most damaging insects of Mississippi hayfields and pastures. These caterpillars can destroy a

cutting of bermudagrass in just a few days. Fall armyworms are unpredictable pests. Some years, high populations do not occur until early fall, and most heavily infested fields require only one or two sprays. Other years, damaging infestations appear as early as June, and some fields require six or more treatments.

Fall armyworms cannot survive the winter in Mississippi. Populations rebuild every year from moths that fly in from locations south of here, such as South America, the Caribbean Islands, and southern Florida. After they fly in from the south, it usually takes them a few generations to build to damaging numbers.

Fall armyworms vary in color depending on their stage of development and diet. Most are green or tan, but some can be dark brown to almost black. The body is punctuated with dark spots. Most notably, there are four spots at the rear of

the body that form a square. Most caterpillars are about 1½ inches long. The head ranges from light brown to dark brown, and on larger caterpillars there is a distinct white inverted y-shape on the head. This white "Y" on the head and the square of four spots on the rear are two of the best ways to identify fall armyworm caterpillars.

Caterpillars take about fourteen days to complete their larval development and about a month to complete a generation, but development rates can vary depending on temperature and other factors. Like most caterpillars, fall armyworms do about 80 percent of their eating during their last two to three days as a larva - when they are "teenaged" caterpillars; therefore, if a field has reached threshold on Friday, but is not scheduled to be cut until the next week, it needs to be treated as soon as possible. A moderate to heavy population of large armyworm caterpillars can eat a whole field of grass in just a couple of days. Grass that looked fine on a Friday morning can be nothing but stems by Monday afternoon.

We wonder just how much grass a fall armyworm caterpillar can eat in its life span. In one experiment, fall armyworms ate an average of 28 square inch-

es of crabgrass per caterpillar. That area is slightly larger than a 4 X 6 index card. In other words, a few fall armyworms caterpillars will not cause much damage, but hundreds of thousands of caterpillars per acre can strip a field in a matter of days.

Experienced forage producers learn to recognize the early signs of fall armyworm feeding. Newly hatched caterpillars are too small to feed all the way through the leaf blade. They begin by feeding on the underside of a leaf but leave the upper epidermis intact. This creates tiny "windowpanes" in the grass blades that appear silver and white. These windowpanes are what gives a field a frosted appearance. Recognizing this early sign of infestation can help save a cutting of hay.

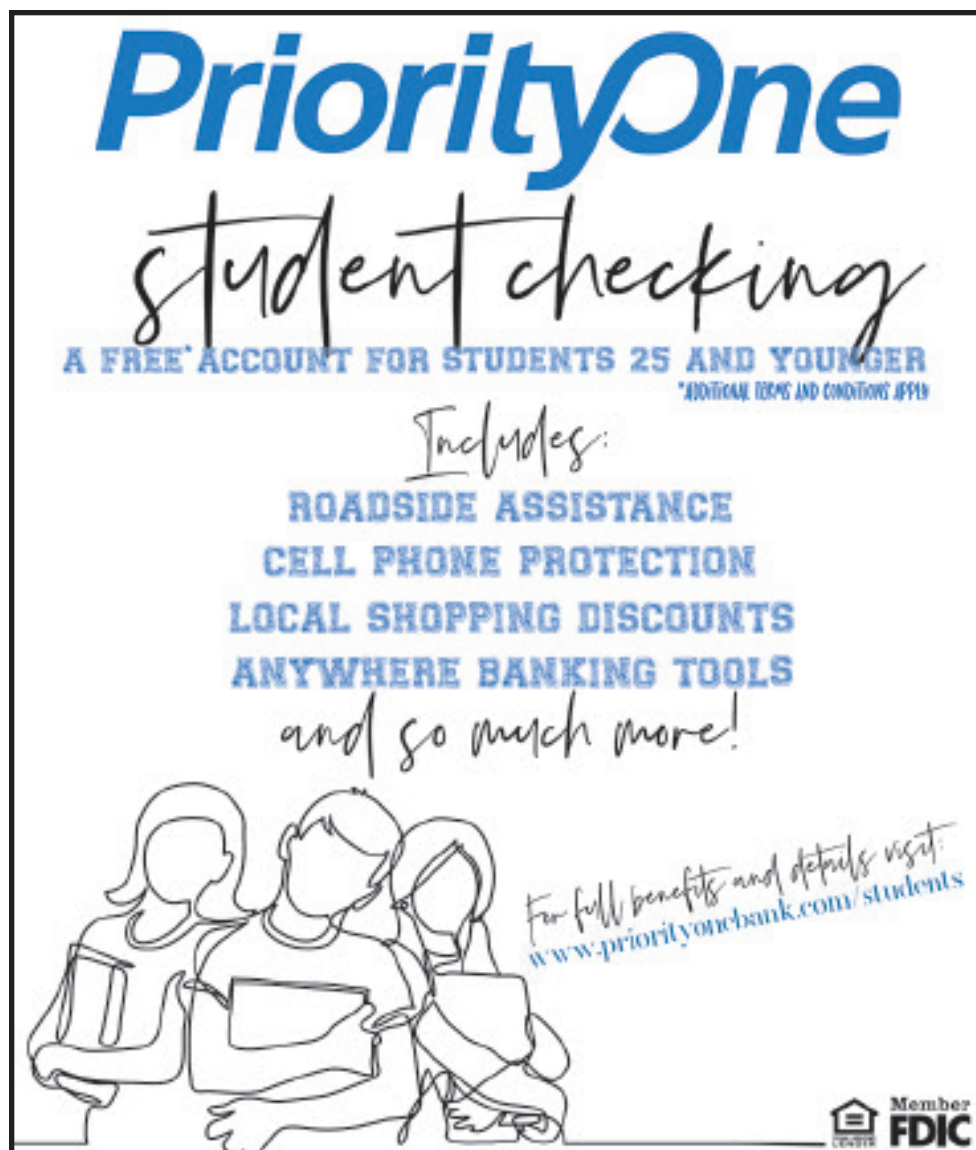
The best way to avoid losing a cutting of hay to fall armyworms is to visit fields every three or four days and check for fall armyworms. Get on your hands and knees and look closely. Ruffle the grass with your fingers and count the larvae that have fallen to the ground in one square foot. Do this in several locations. Treatment is recommended when counts exceed three caterpillars that are ½ inch or longer, per square foot. We just need to be sure to pay attention to pre-harvest

intervals when choosing an insecticide to use on a field that is near cutting.

One option in dealing with fall armyworms in hay fields is to just go ahead and cut the hay. This can be a good choice, if the field is ready to cut and the forecast promises good hay curing weather. Be careful with this decision, though. If there are a lot of big caterpillars, they will "cut the hay" for you in another couple of days. If there are threshold numbers of caterpillars, and it will be two days or more before you can cut the field, you probably need to go ahead and spray.

Over the past few years, there have been significant improvements in treatment options for fall army worms. Some traditional treatment options like Sevin and Malathion are still available, but there are new treatment options that are cheaper, more effective, and have better pre-harvest intervals. These include several pyrethroid insecticides (Mustang Max, Baythroid, and Karate), as well as Tracer and Coragen and the insect growth disruptors Interpid and Demilin.

The pyrethroids insecticides are all restricted-use products, which means you must have a private applicators license to buy and use them.



PriorityOne
student checking
A FREE ACCOUNT FOR STUDENTS 25 AND YOUNGER
*ADDITIONAL TERMS AND CONDITIONS APPLY

Includes:

- ROADSIDE ASSISTANCE
- CELL PHONE PROTECTION
- LOCAL SHOPPING DISCOUNTS
- ANYWHERE BANKING TOOLS

and so much more!

For full benefits and details visit:
www.priorityonebank.com/students

Member FDIC

Library open in September



Special to Pelahatchie News

Special to Pelahatchie News

The Pelahatchie Library is open now Monday through Thursday from 10:30 a.m. to 5 p.m.

There are programs available through CMRLS Facebook page at CMRLS Libraries. For more information, contact Tina Mauney at the library at 601.854.8764.



EZ WHEELS INC.
Kubota
For Earth. For Life.
Your authorized Kubota dealer!
601-854-5112 601-854-5162



NEWS
Pelahatchie
Mailed for FREE
to every resident and business
in the Rankin Zip Code of 39145.
To advertise, call Suzie at
601-566-1932, x. 2.

Mississippi Legislature overrides Governor's Education veto and funds small businesses



By Guest Columnist
Mississippi Representative,
Tom Miles

Special to
Pelahatchie News

We as legislators returned to the capitol on Monday, September 10, to override the Governor's veto of the Education appropriation bill, funded the teacher incentive program, and also amended the 'Back to Business Mississippi Grant Program' that was created back in May and increases the grant program to \$3,500 per business.

The first bill the House took up was the Education appropriation bill that was vetoed by the Governor. The veto was the first time a Governor had been overridden in over 18 years. The House override was 110-6, and the Senate was 41-1.

When the Education bill was vetoed, it put all of our schools districts in limbo. The budget will help fill all the uncertainties that were not filled. By the legislature overriding the veto, it will finally allow our school districts to pay teacher salaries, activate classroom supply cards, fund school nurses, allow the blind and deaf schools to open, fund FFA programs, and pay other operating expenses. This was accomplished without reducing the MAEP amount originally allocated, which would have taken money from our schools, and by approving an additional \$28 million to fund the School Recognition bonuses teachers are entitled to. The School Recognition Program is based on last year's accountability results, not this year's, when testing was suspended due to COVID-19.

After passing with an overwhelming majority in each chamber, SB 3053 will implement several changes to the program that was created to disburse \$300 million of Mississippi's CARES Act funds to small businesses that have been negatively impacted by the COVID-19 pandemic — \$60 million in direct payments to businesses that were forced to

close by government order and \$240 million in grants to Mississippi small businesses.

The bill passed Monday will make the \$2,000 direct payment, which is separate from the grant program, available to additional businesses. As for the grant program, the minimum amount granted has been increased from \$1,500 to \$3,500.

Also, a provision has been removed to eliminate a deduction in grant funding for businesses that also received funding from the federal Paycheck Protection Program. Prior to this change, if a business was awarded a \$10,000 grant and had gotten any funding from the PPP, those funds would've been subtracted from the grant allotment from the Mississippi Development Authority.

If you have already filled out the application, you will be grandfathered in and don't have to do anything else to receive the extra money or other changes. If you own a business, please go to the website www.backtobusinessms.org to fill out the application process, for the grant program remains open. Every business will basically receive \$3,500 for filling out the application.

We have now adjourned but will have to go back in the days to come to finish the Department of Marine Resources budget when an agreement can be made between coast lawmakers. We also have saved several days of the session to go back in October to adjust the dollars that are left to deal with CARES money, to make sure that it is allocated before the federal deadlines.

Thank you all for giving me the opportunity to serve you as your State Representative. Thank you all once again for the kindness, prayers, and friendship remembering me and my family in the passing of my mom. Your kindness and friendship will never be forgotten.

If I can be an assistance to you at any time, please stop by my office in Forest, email me at tmiles@house.ms.gov, or call me at 601-469-7886.

FOOD PLOT MIXES AND SHOOTING HOUSES ARE NOW IN STOCK AND FALL APPAREL IS ARRIVING DAILY.



Griffin Family Medical Clinic

Building a Healthy Community One Individual at a Time.

Mary Ann Griffin, CFNP
Tracie Bass, LPN

Kim Risher
Keli Robertson

507 Hwy 80 West
Pelahatchie, MS 39145

601-854-8002



TurnKey
PROPERTIES

Megan Hall

601-540-4004 Cell

601-427-5000 Office

MEMBER National Franchise 500
NARCI Real Estate License # 2000

**We have the capability to handle your
full transaction with no contact.
Virtual showings and inspection reviews,
electronic signature and document processing.**

Custodians are pivotal in this time of sanitizing



By Guest Columnist
Robin Sanders, Principal,
Pelahatchie Elementary

Special to
Pelahatchie News

Custodians, we appreciate YOU!! When I think about our school custodians, I think about the smiles they have for all students and faculty. When you hear their keys jangling, a sense of comfort floods over you, because you know they are coming down the hall and they are ready to work. They are the KEY to our success.

Sam Ewing, former baseball player, said, "Hard work spotlights the character of people: some turn up their sleeves, some turn up their noses, and some don't turn up at all."

Our custodians turn up their sleeves each and every day! Willie Banks, Glendora Ragsdale and Cole Buskirk are invaluable to the success at PeLES.

Thank you for turning up! Thank you for rolling up your sleeves. And thank you for working hard, even when some of us turn up our noses.

When most people think about getting a school ready to open for the year, they think about the hard work of teachers and administrators. But custodians are the pivotal players in preparing a school for a new year.

They are also key to our health during this increased time of sanitizing. The

safety and health of students and faculty is their top priority. They come



Special to Pelahatchie News

Custodians Willie Banks, Glendora Ragsdale and Cole Buskirk are invaluable to the success at PeLES according to the principal. Pictured (l to r) are: Banks, Ragsdale and Buskirk.

in early and stay late in order for the building to be cleaned and ready for the next day of learning opportunities. The

faculty can be assured that germs have been tackled with our custodians on the job.

"Our custodians are important to our school. I appreciate all the effort they put into cleaning the school. All of them are friendly and helpful throughout the day! I am glad they are part of our tribe!!"

-Bethany Tucker, fifth-grade student
"Hardworking staff that have a genuine love for all of our students and teachers. They are working endlessly to keep all of us safe."

-Shelia Sharplin, PeLES Music Teacher

"Our custodians are really nice, and they work hard. I've seen Mr. Banks bringing food and giving it to the teachers just to be nice!"

-Chase Parker, fifth-grade student

Thank you for your service, dedication and loyalty. We couldn't do our jobs without you!

BUSINESS SPOTLIGHT DIRECTORY

Thank you for supporting local businesses, and we look forward to serving everyone.

CROSS ROADS STORE GRILL
Tommy & Glenn Exp. Owners
1126 Hwy. 48 South
Pelahatchie

Please call us at
601-546-2255
for a take-out order or dine inside or on our covered patio.

For Daily Specials
Find us on Facebook

WOLF FUNERAL SERVICES, INC.
"Familiar faces providing personal service in your time of need."
www.wolffuneralservices.com

136 Front Street
Lake, MS 39092
601-775-3400

3054 Highway 80 W.
Morton, MS 39117
601-732-3624

Crooked Creek Animal Hospital, INC
Charles M. Edwards, II, DVM
Staci L. Rhodes, LVM
Bayard Grills, DVM

123 Pleasant Face Drive
PO Box 130
Pelahatchie, Ms. 39145
www.crookedcreekanimal.com
Phone: 601-854-7808
Fax: 601-854-7810

Follow us on:
Facebook: www.facebook.com/CrookedCreekAH
Instagram: www.instagram.com/crookedcreekah

TOMMY MILES AGENCY PRINCIPAL

Allstate
Your financial partner

TRI-COUNTY INSURANCE AGENCY
29 HWY 481 SOUTH
MORTON, MS 39117

Phone: (601) 732-6769
Fax: (601) 732-6777
Email: insurancetm@allstate.com

RICHLAND WRECKER SERVICE & AUTO REPAIR
We Go The Extra Mile • 24 Hour Service
22 Years Experience in Auto Repair

Brakes • Timing Belts • Water Pumps • Clutches • Certified A/C and More

Bus. 601-936-0003 **24 HOUR** 2651 Hwy. 468
Fax 601-936-0353 **601-502-3706** Pearl, MS 39208

WE BUY JUNK CARS

Master Card American Express Discover VISA

Crossgates Jewelers, Inc.
Tammy & Gerald Frazier
Owners

601-919-5312 401 Cross Park Drive
Watch & Jewelry Repair Suite A
Custom Design Pearl, MS 39208

Specialty Tree Service LLC
601-405-5857

Specializing in large and dangerous tree removal

Free Estimates!

Gabe Walters
601-405-5857

Tree Removal • Tree Trimming
Stump Grinding • Lot Clearing
Debris Removal

LAMPTON-LOVE GAS CO.

RESIDENTIAL - FARM - INDUSTRIAL
SALES & SERVICES
GAS - SYSTEMS - CARBURETORS

DANIEL ROBINSON
MANAGER

PELAHATCHIE, MS
601-854-S256

LET

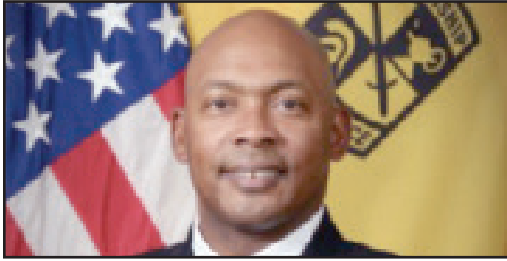
NEWS Pelahatchie

PRINT YOUR LOGO ITEMS!

YOUR LOGO HERE

Please contact
Chris McCoy at
(601) 706-9237.

PHS introduces new teachers and staff



Pelahatchie High School (PHS) is geared up for the unusual 2020-2021 school year. New teachers and staff that have joined the school include: Col. (Ret.) Andrell Hardy, JROTC instructor.



Anna Kilpatrick, eighth grade English, ACT prep, and Learning Strategies



April Harrell, Special Education Assistant



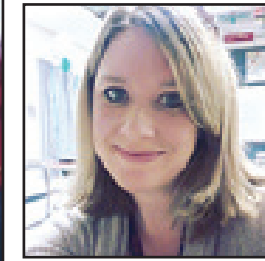
Emily Collins, Tutorial and inclusion teacher



Kaylan Cooper, Art instructor



Kimberley Keyes, Special Education Assistant



Leah Hebert, English I, English 2, and Honors English



Nick Thomas, Administrative Intern



Philip Nelson, Assistant Principal



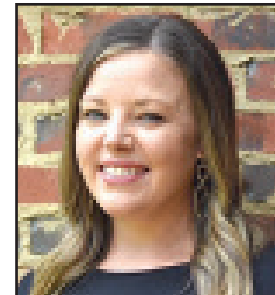
Tammie Bright, Biology and eighth grade science



Ryan Keeton, Athletic Director and Head Football Coach



William Ragland, Band Director




Patti Baughman, Health Science, Human A&P, and Dual Credit Biology



Lauren Peresich, U.S history, economics, and AP U.S history assistant basketball and volleyball coach.

Photos special to Pelahatchie News



**SOUTHERN PINE
ELECTRIC**

BRINGING THE POWER SINCE 1938

WWW.SOUTHERNPINE.COOP | P.O. BOX 60
13491 HWY. 28 | TAYLORSVILLE, MS 39168 | 800.231.5240

Pastor's Perspective: The paradox of our time



By Guest Columnist John Vaughn, Pastor, Cross Roads Baptist Church

Special to Pelahatchie News

George Carlin was a popular comedian in the 1970s and 1980s. The following reading was attributed to him and is said to have been written around 2000. I found this to be rather poignant and still applicable to our times. See if you agree.

An observation by George Carlin: "The paradox of our time in history is that we have taller buildings, but shorter tempers, wider freeways, but narrower viewpoints. We spend more, but have less; we buy more, but enjoy less. We have bigger houses and smaller families, more conveniences, but less time. We have more degrees but less sense, more knowledge, but less judgment, more experts, yet more problems, more medicine, but less wellness.

We drink too much, smoke too much, spend too recklessly, laugh too little, drive too fast, get too angry, stay up too late, get up too tired, read too little, watch TV too much, and pray too seldom.

We have multiplied our possessions, but reduced our values. We talk too much, love too seldom, and hate too often.

We've learned how to make a living, but not a life. We've added years to life, not life to years. We've been all the way to the moon and back, but have trouble crossing the street to meet a new neighbor. We conquered outer space, but not inner space. We've done larger things, but not better things.

We've cleaned up the air, but polluted the soul. We've conquered the atom, but not our prejudice. We write more, but learn less. We plan more, but accomplish less. We've learned to rush, but not to wait. We build more computers to hold more information, to produce more copies than ever, but we communicate less and less.

These are the times of fast foods and slow digestion, big men and small character, steep profits and shallow relationships.

These are the days of two incomes, but more divorce, fancier houses, but broken homes. These are days of quick trips, disposable diapers, throwaway morality, one night stands, overweight bodies, and pills that do everything from cheer, to quiet, to kill. It is a time when there is much in the showroom window and nothing in the stockroom.



Special to Pelahatchie News

A time when technology can bring this letter to you, and a time when you can choose either to share this insight, or to just hit delete.

Remember to spend some time with your loved ones, because they are not going to be around forever.

Remember, say a kind word to someone who looks up to you in awe, because that little person soon will grow up and leave your side.

Remember to give a warm hug to the one next to you, because that is the only treasure you can give with your heart, and it doesn't cost a cent.

Remember to say 'I love you' to your partner and your loved ones, but most of all, mean it. A kiss and an embrace will mend hurt when it comes from deep inside of you.

Remember to hold hands and cherish the moment, for someday that person will not be there again.

Give time to love, give time to speak! And give time to share the precious thoughts in your mind.

And always remember, life is not measured by the number of breaths we take, but by those moments that take our breath away."

Be sure to take you family to church on Sunday, or watch an online worship service together!



AUGUST SCHEDULE

Sunday Worship Service

9:00 a.m. - In Person Worship Service with Limited Seating in the Sanctuary. Overflow seating in the Fellowship Hall and Student Center. No Childcare or Sunday School. Service broadcast live on the Cross Roads Baptist Church Facebook page.

Wednesday Prayer Meeting

6:00 p.m. on the Cross Roads Baptist Church Facebook page

Morning Devotions

7:30 a.m. on the Cross Roads Baptist Church Facebook Page

"The Church has not been closed...the Church has been deployed!"
(601) 546-2297 • www.crossroadspel.org

Obituaries

NAME	AGE	CITY	DOD	Arrangements
Virginia Elizabeth Boler Weldon	80	Forest, MS	7/25/2020	Wolf Funeral Serv.
Jeffrey Dale Watkins	46	Morton, MS	7/26/2020	Wolf Funeral Serv.
Deardry Charlie Gilbert	57	Morton, MS	7/26/2020	Wolf Funeral Serv.
Nina Hazel Everett	90	Forest, MS	7/27/2020	Wolf Funeral Serv.
John David Cooper	90	Morton, MS	7/27/2020	Wolf Funeral Serv.
David Lee McGriff	37	Morton, MS	7/28/2020	Wolf Funeral Serv.
Barbara Lynn Jarrell McCurdy	69	Forest, MS	7/30/2020	Wolf Funeral Serv.
Randy Joe "Pete" Wilkerson	49	Lake, MS	7/31/2020	Wolf Funeral Serv.
Betty Lou Stevens	80	Lake, MS	8/1/2020	Wolf Funeral Serv.
Franklin Curtis Wood	30	Pelahatchie, MS	8/8/2020	Wolf Funeral Serv.
Ida Mae Shuler	77	Forest, MS	8/9/2020	Wolf Funeral Serv.
Claudia Christine Weaver	89	Carthage, MS	8/10/2020	Wolf Funeral Serv.
Rev. Delbert W. Lathem	64	Walnut Grove, MS	8/10/2020	Wolf Funeral Serv.
Annie Stingley	101	Morton, MS	8/13/2020	Wolf Funeral Serv.



Pelahatchie
Baptist Church

300 Church Street - Pelahatchie, MS 39145-60145-8809
www.pelahatchiebaptist.com

Sunday School 9:30 am • Worship 10:30 am, 6:00 pm • Wednesday Youth & Children 6:00 pm • Adults 6:30 pm

Updated schedules.  Games begin at 7 pm.

2020 PELAHATCHIE HIGH SCHOOL FOOTBALL SCHEDULE

SEPT 4 @ SCOTT CENTRAL	SEPT 11 VS FOREST	SEPT 18 @ BAY SPRINGS	SEPT 25 @ JACKSON ACADEMY	
OCT 2 TBD (HOMECOMING)	OCT 9 TBD	OCT 16 VS PISGAH	OCT 23 @ ST. JOE-MADISON	OCT 30 @ MORTON

JR. HIGH SCHOOL FOOTBALL SCHEDULE

SEPT 8 @ PISGAH*	SEPT 15 VS SEBASTOPOL*	
SEPT 22 @ MCLAURIN**	SEPT 29 @ LAKE*	OCT 6 VS MADISON ST. JOE*

*6:00 **5:30

2020 PELAHATCHIE HIGH SCHOOL VOLLEYBALL SCHEDULE

SEPT 3 @ PUCKETT JV 5:00 V 6:00	SEPT 5 PELAHATCHIE ROUND ROBIN TBD	SEPT 8 @ FOREST JV 5:30 V 6:30	SEPT 15 FLORENCE JV 5:30 V 6:30	SEPT 17 RICHLAND JV 5:30 V 6:30
SEPT 22 RALEIGH JV 5:30 V 6:30	SEPT 24 MISS. SCHOOL FOR THE DEAF V 5:30	SEPT 29 @ MADISON ST. JOE** JV 5:30 V 6:30	OCT 6 @ PISGAH** JV 5:30 V 6:30	OCT 8 @ RALEIGH JV 5:30 V 6:30

**District Play

Great strides through tough circumstances



Special to Pelahatchie News

By Guest Columnist Dr. Teague Burchfield, Principal, Pelahatchie High School

We are proud to announce a very successful start to the 2020 school year!

Thorough planning and amendments to our daily processes have paid dividends in this world of uncertainty. While the COVID-19 pandemic has certainly created many obstacles for a traditional start to the school year, everyone - faculty, staff, parents and students - should be proud of how well we have adapted to the safety mandates and restrictions that currently exist. Furthermore, we are quite fortunate to have a forward-thinking school district that has developed a strategic plan for reentry, as well as one that has allowed for each school zone the opportunity to make adjustments to the school day based on their particular environments.



Special to Pelahatchie News

We appreciate your patience and grace as we continue to successfully navigate the school year. Safety comes first, and we ask that you continue to assist us by practicing daily health checks with your children, promoting the use of masks at all times, and by continuing to meet social distancing expectations. In turn, we will continue to provide a first-class education for your children and will be available if there are any questions or concerns regarding the school day.

A successful school start has allowed the athletic season to recommence. Our Lady Chiefs volleyball team, led

by Coach Nikki Nutt, have begun their sophomore season in an upbeat fashion. We look forward to their continued growth as a program and appreciate any and all support as the season moves forward.

The fall season also means that football is back! Our Chiefs open this week on the road at Scott Central, and this year's football squad, led by Coach Ryan Keeton, is prepared to build on the successes of past seasons. A talented group of young men have put in much work preparing for the upcoming season.

The fall season also brings on the sounds of the Chiefs Marching Band and the chants of our cheerleaders. Under the direction of William Ragland and Mandy Herrington, respectively, both groups absolutely apply the finishing touches to our Friday night festivities.

As many of you know, social distancing restrictions have been placed on all athletic events. Because of these restrictions, ticket sales have been devoted first to the immediate family members of rostered participants. We apologize for any inconvenience that these restrictions may bring and look forward, as you do, to a future of relaxed regulations at these events.

The Labor Day Weekend is upon us; may you have safe travels this weekend and enjoy your time with family and friends. Upon return from the holiday break, let's build on the successes that September brought and continue to make this school year a memorable one for all the right reasons. Go Chiefs!

Pelahatchie Elementary introduces new teachers



Photos special to Pelahatchie News

Pelahatchie Elementary School (PelEs) introduced the new teachers for the 2020-2021 school year. Pictured (l to r) front row, are: Destiny Hilliard, Sarah Beard, Haley Moore, Cassie Sumrall, and Hayden West; and back row: Taylor Vinson, Alayna Keeton, Bailey Anderson, Sydney Ogletree, Tara Wiles, and Adyson Crowe.



RANKIN COUNTY BUCKING BRONC BASH

The Show Must Go On!

Sunday, October 4, 2020, 2:00 p.m.

8 miles North of Pelahatchie on Highway 43 – RAIN OR SHINE

144 Justin Dr., Pelahatchie, MS 39145

FUNDRAISER FOR LEESBURG FIRE DEPARTMENT AND EVER REACHING COMMUNITY OUTREACH (ERCO)

\$10 admission – Kids 10 & under FREE – KID'S ZONE

THE BENEFIT RODEO FEATURES

10 bareback riders • 10 saddle bronc riders • 10 barrel racers 20 bull riders

Like us on Facebook @RCBBB

Sponsored by Pelahatchie News



401 Hwy 43 S, Pelahatchie, 39145

Hours: Mon-Fri, 7-5, Sat 7-12



Get a FREE Quote On Onsite Barns, Sheds, Shops, & More!

WE SELL HUNTING & FISHING LICENSES PLUS STATE & FEDERAL DUCK STAMPS!

Now offering STEEL TRUSSES and LEAN-TO TRUSSES for your Ag & Shop Projects. We also added STEEL KNEE BRACES for New & Retro Construction on Poultry Houses. For more information, call Steve at 601-951-7736 or Jeff at 601.720.1623.



The Old Home Place located in Puckett, MS

New Fall Hours:

Effective September 5, 2020.

Fruit stand Hours:

Saturday CLOSED

Sunday CLOSED

Monday 10:00 am to 3:00 pm

(Closed Labor Day Holiday, Sept 7th)

Tuesday 10:00 am to 3:00 pm

Wednesday 10:00 am to 3:00 pm

Thursday 10:00 am to 8:00 pm

Friday 10:00 am to 8:00 pm

Restaurant Hours:

Lunch Monday thru Friday - 10:30 am to 2:00 pm

Dinner Thursday & Friday - 5:00 pm until

Visit our Facebook page The Old Home Place

to view our lunch and dinner menu postings.

For more information call 601 825 8500.

Gift Certificates Sold

Catering available upon request.



Located on Hwy. 18